



POMTAVA

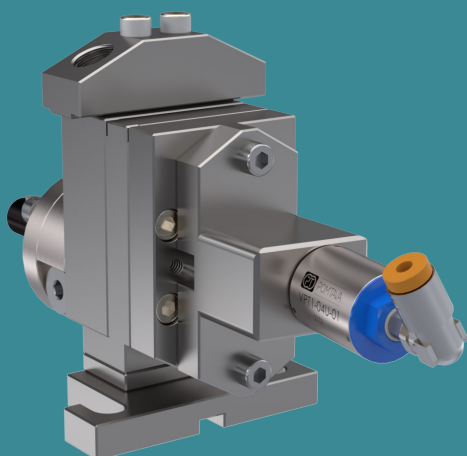
METERING GEAR PUMPS

DATA SHEET

1611-4-1



1611-4-2



Available flow rates (cc/rev)

0.3 / 0.6 / 1.2 /

1.8 / 2.4 / 3.0

Application fields

This pump is mainly used for water-based and solvent-based paints in the industrial and automotive sectors.

Strong points

- All parts are in tempered stainless steel
- Maximum reduction of «dead zones» allowing for better flushing
- Sealing option quickly interchangeable
- Strong, coated drive shaft, held in place with 2 bearings and a axial thrust
- Centering pins making pump assembly easier and increasing its accuracy

Technical data

- Sealingsystem: Lip seals and liquid barrier (16KA)
- Rotation speed: From 10min⁻¹ to 200min⁻¹, depending on the product involved
- Flow rate range: From 0.0005 l/min to 0.6 l/min (depending on pump size)
- Standard direction of rotation: Clockwise rotation (A)
- Allowed outlet pressure: Max. 100 bar
- Input and output: 2x Ø 6mm on the pump cover. Delivered with connecting block G1/4"
- Drive shaft diameter: Ø 12mm with 4mm key
- Drive shaft height: H=40mm
- Fixing distance: L=55mm

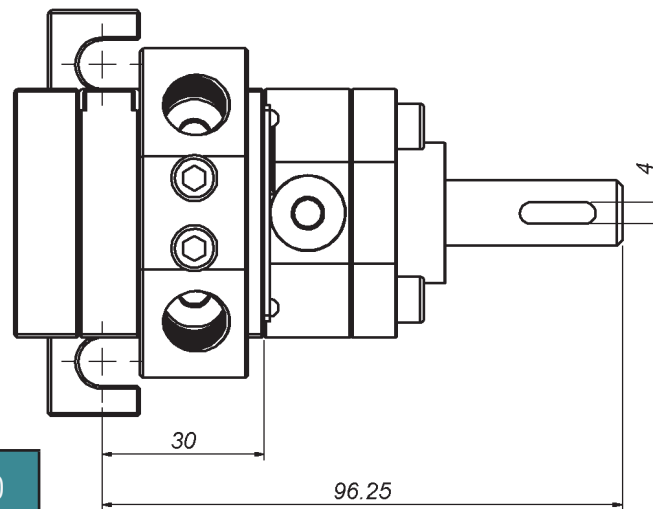
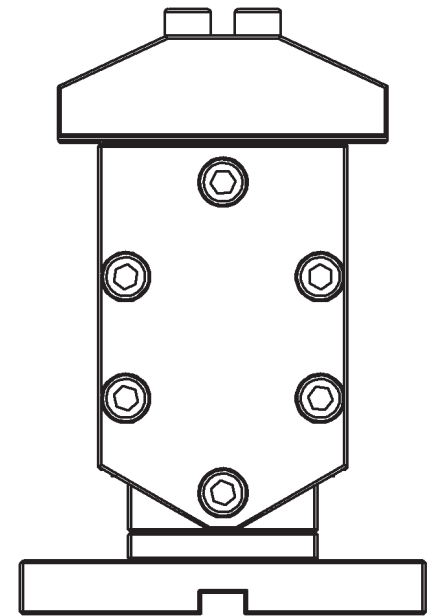
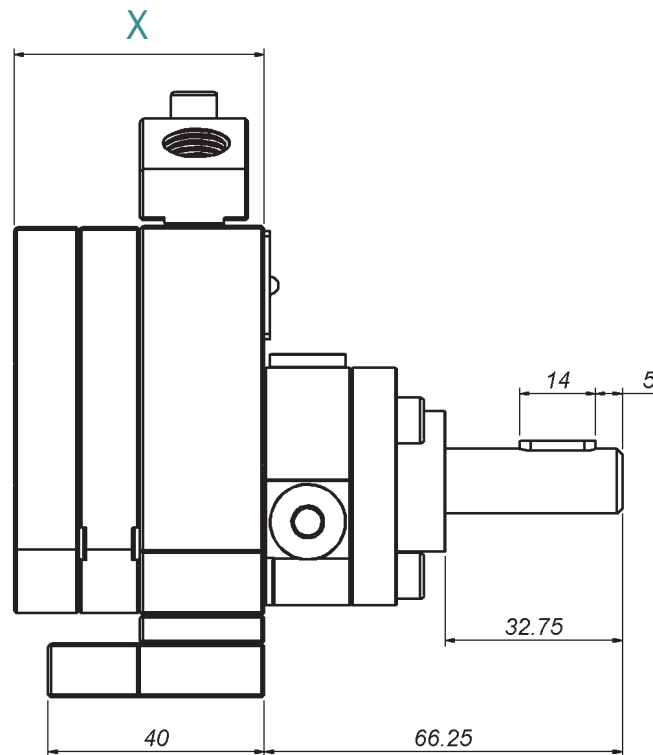
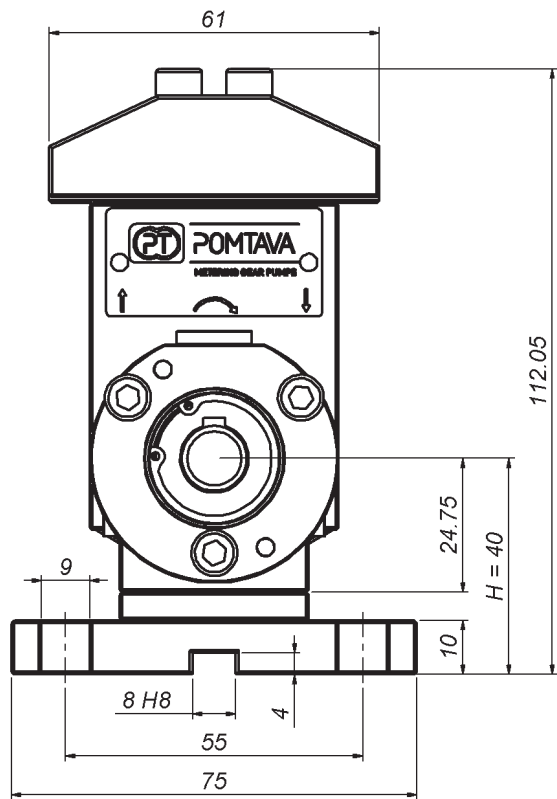
Available options / accessories

- Support H=51mm / L=80mm
- Pump available in ATEX certified version
- Product fittings on request
- Calibration certificate
- Pressure sensors
- Pressure regulators
- Integrated flow meter

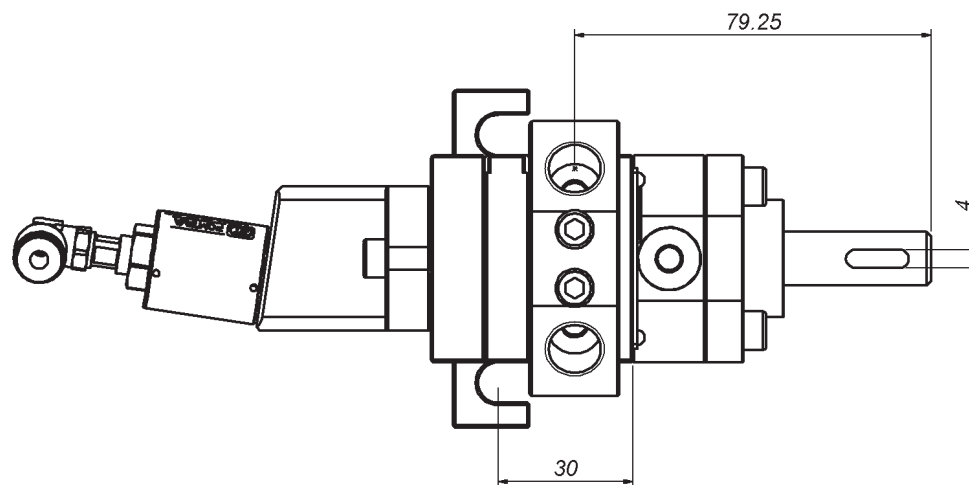
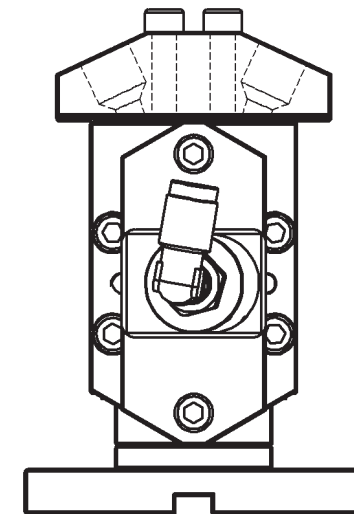
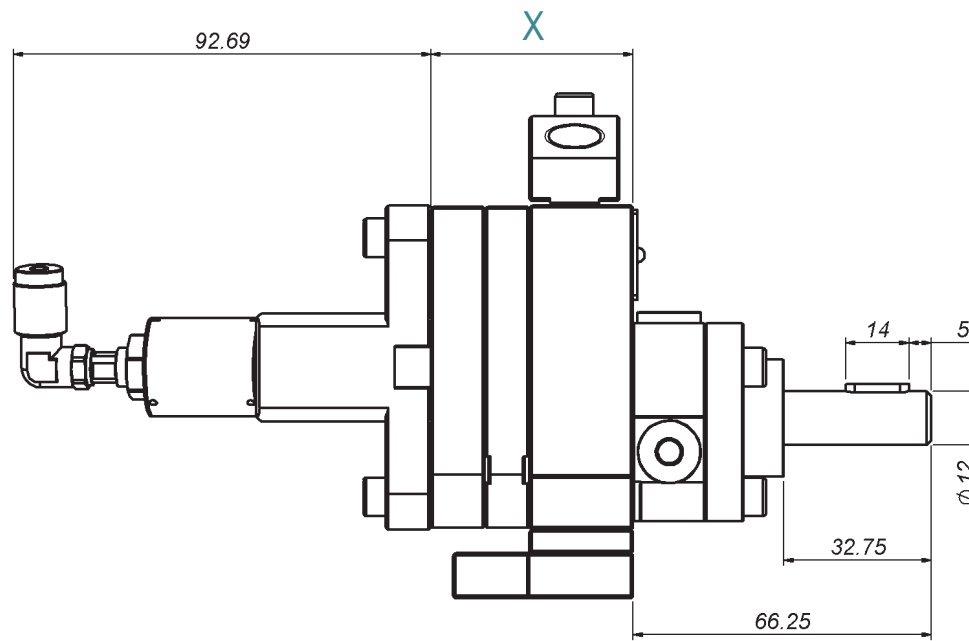
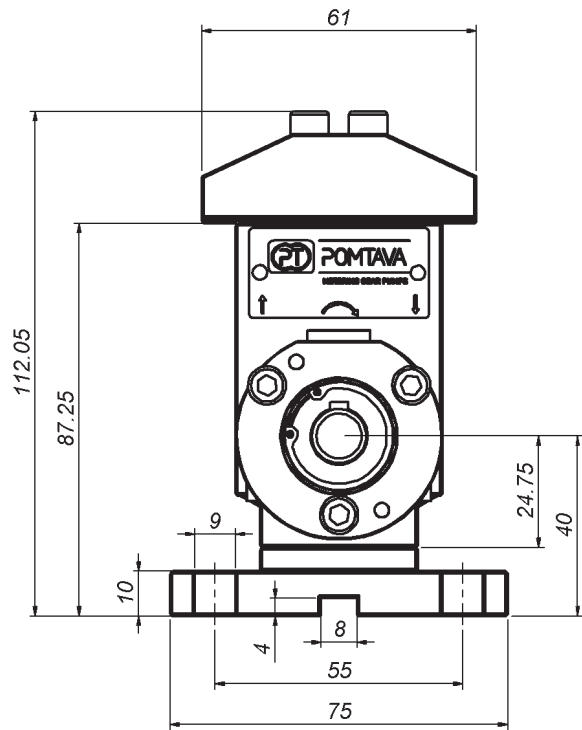
Definition / Pump options

	1611	-4	-1	/	A	/	0.3	/	S	/	R	/	T2	/	KA	/	12	/	14	/	G
I/O location																					
I/O on the pump body		-4																			
Pump flushability																					
Without flushing			-1																		
With flushing			-2																		
Rotation direction																					
Clockwise rotation					A																
Anticlockwise rotation					Z																
Clockwise rotation + Anticlockwise rotation					AZ																
Cylinder capacity																					
0.3 cc/rev							0.3														
0.6 cc/rev							0.6														
1.2 cc/rev							1.2														
1.8 cc/rev							1.8														
2.4 cc/rev							2.4														
3.0 cc/rev							3.0														
Operation clearance																					
Reduced clearance, for low viscosity products																					F
Standard clearance, for the vast majority of products																					S
Increased clearance, for high viscosity or highly filled products																					J
Special clearance, specific to a special product																					H
Bypass option																					
Without bypass																					
With bypass																					R
Surface treatment																					
Without treatment																					
ADLC (Amorphous Diamond Like Carbon)																					T2
Sealing system																					
Lip seals + liquid barrier																					KA
Lip seal + teflon packing																					EB
Drive shaft diameter																					
Shaft ø12mm with 4mm key																					12
Shaft ø10mm with 3mm key																					10
Product connection																					
Connection block for 2 fittings G1/4"																					14
Connection block for 2 fittings G1/8"																					18
Connection block including housing for pressure transmitters																					W
Modification for difficult products*.																					
Without modification																					
With modification (can be G or Gx depending on the type of modification)																					G

*To be defined with Pomtava
Bold line = standard Pomtava



Flow rate (cc/rev)	0.3	0.6	1.2	1.8	2.4	3.0
X (mm)	37.8	40.5	46.1	44.90	47.9	51.4



Flow rate (cc/rev)	0.3	0.6	1.2	1.8	2.4	3.0
X (mm)	37.8	40.5	46.1	44.90	47.9	51.4