

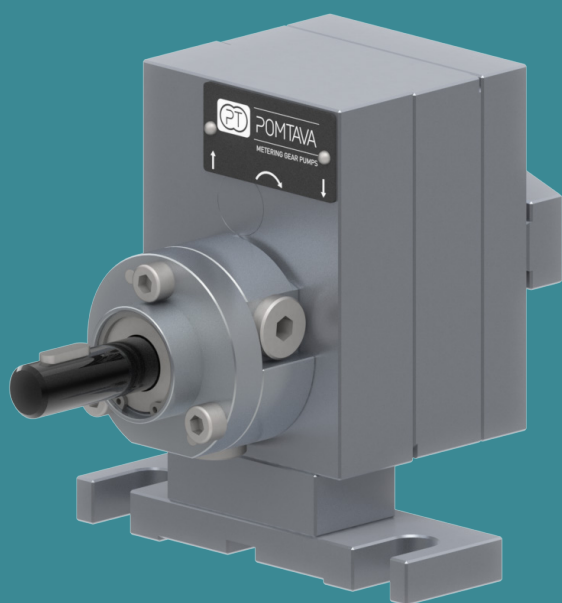


POMTAVA

METERING GEAR PUMPS

DATA SHEET

2610-1-1



Available flow rates (cc/rev)

1.2 / 1.8 / 2.4 / 3.0
6.0 / 10.0

Application fields

Silicones, glues, elastomers, polyurethanes, various resins, various hardeners, pigments, polyesters, epoxy, etc.

Strong points

- All parts are in tempered stainless steel
- Maximum reduction of «dead zones» allowing for better flushing
- Sealing option quickly interchangeable
- Strong, coated drive shaft, held in place with 2 bearings and a axial thrust
- Centering pins making pump assembly easier and increasing its accuracy

Technical data

- Sealingsystem: Lip seals and liquid barrier (26KA)
- Rotation speed: From 10min⁻¹ to 200min⁻¹, depending on the product involved
- Flow rate range: From 0.012 l/min to 2 l/min (depending on pump size)
- Standard direction of rotation: Clockwise rotation (A)
- Allowed outlet pressure: Max.100 bar (10cc/rev max. 50bars)
- Input and output: 2x Ø 6mm on the pump cover. Delivered with connecting block G1/4"
- Drive shaft diameter: Ø 12mm with 4mm key
- Drive shaft height: H=51mm
- Fixing distance: L=80mm

Available options / accessories

- Support H=40mm / L=55mm
- Pump available in ATEX certified version
- Product fittings on request
- Calibration certificate
- Pressure sensors
- Pressure regulators
- Integrated flow meter

Definition / Pump options

	2610	-1-1	-2	/	A	/	3.0	/	S	/	T2	/	KA	/	12	/	14	/	HZ	/	G	
I/O location																						
I/O at the back of the pump		-1-1																				
Alternative*																						
Reinforced model for pressure →100 bar																						
Rotation direction																						
Clockwise rotation																						
Anticlockwise rotation																						
Clockwise rotation + Anticlockwise rotation																						
Cylinder capacity																						
1.2 cc/rev																						1.2
2.4 cc/rev																						2.4
3.0 cc/rev																						3.0
6.0 cc/rev																						6.0
10.0 cc/rev																						10.0
Operation clearance																						
Reduced clearance, for low viscosity products																						F
Standard clearance, for the vast majority of products																						S
Increased clearance, for high viscosity or highly filled products																						J
Special clearance, specific to a special product																						H
Surface treatment																						
Without treatment																						
ADLC (Amorphous Diamond Like Carbon)																						T2
Sealing system																						
Lip seals + liquid barrier																						KA
Lip seal + teflon packing																						EB
Drive shaft diameter																						
Shaft ø12mm with 4mm key																						12
Shaft ø10mm with 3mm key																						10
Product connection																						
Connection block for 2 fittings G1/4"																						14
Connection block for 2 fittings G3/8"																						38
Connection block including housing for pressure transmitters																						W
Heating option																						
Without heating option																						
Pump prepared for 2 heating elements ø10mm, length 40mm + 2 housings for PT100 sensor																						HZ
Modification for difficult products*																						
Without modification																						
With modification (can be G or Gx depending on the type of modification)																						Gx

*To be defined with Pomtava
Bold line = standard Pomtava

