

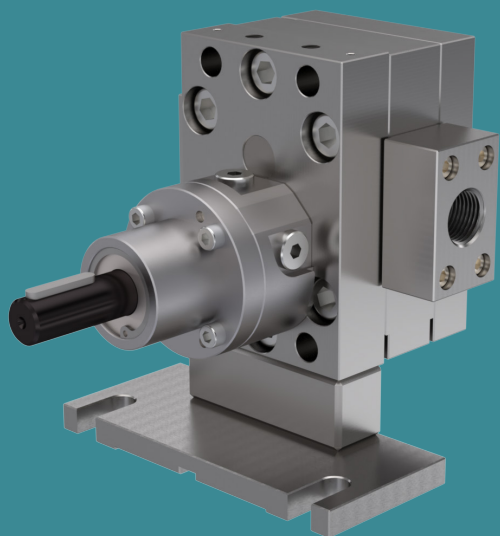


POMTAVA

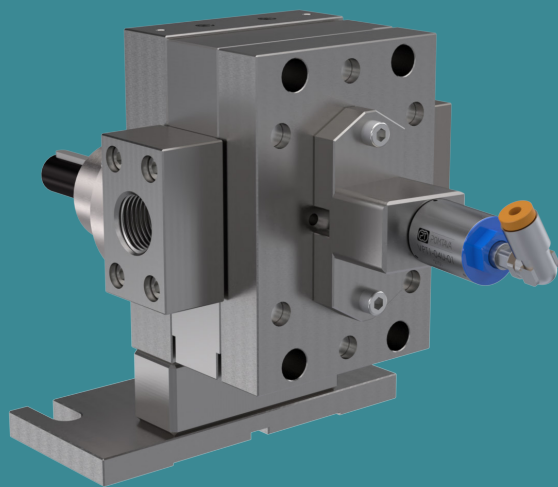
METERING GEAR PUMPS

## DATA SHEET

# 3610-3-1



# 3610-3-2



Available flow rates (cc/rev)

6.0 / 10.0 / 16.0 / 22.0

## Application fields

Silicones, glues, elastomers, polyurethanes, various resins, various hardeners, pigments, polyesters, epoxy, etc.

## Strong points

- All parts are in tempered stainless steel
- Maximum reduction of «dead zones» allowing for better flushing
- Sealing option quickly interchangeable
- Strong, coated drive shaft, held in place with 2 bearings and a axial thrust
- Centering pins making pump assembly easier and increasing its accuracy

## Technical data

- Sealingsystem: Lip seals and liquid barrier (36EA)
- Rotation speed: From 10min<sup>-1</sup> to 200min<sup>-1</sup>, depending on the product involved
- Flow rate range: From 0.06 l/min to 4.4 l/min (depending on pump size)
- Standard direction of rotation: Clockwise rotation (A)
- Allowed outlet pressure: Max. 100 bar (22cc/rev max. 50bar)
- Inlet and outlet ports: On the intermediate plate, G1/4" (6.0cm<sup>3</sup>/rev), G1/2" (10 + 16 cm<sup>3</sup>/rev), G3/4" (22cm<sup>3</sup>/rev)
- Drive shaft diameter: Ø 16mm with 5mm key

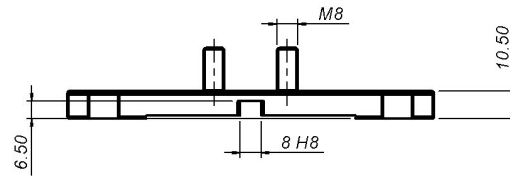
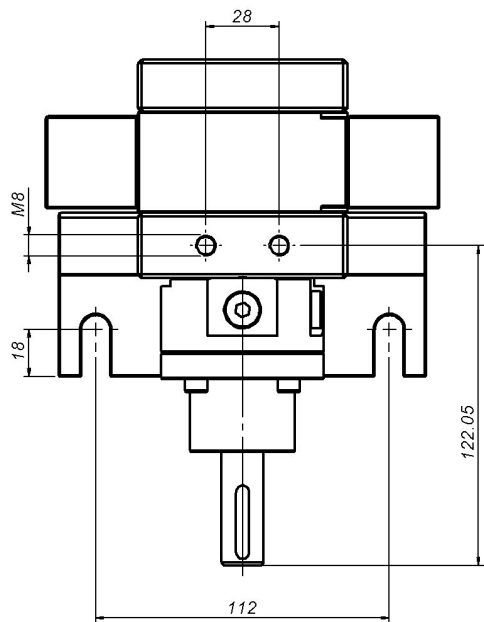
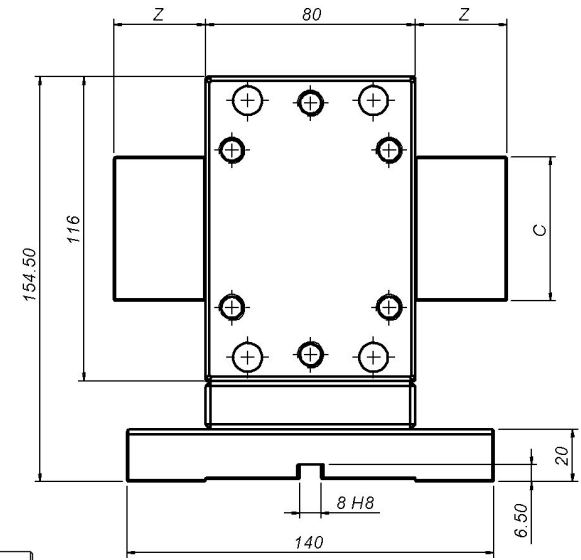
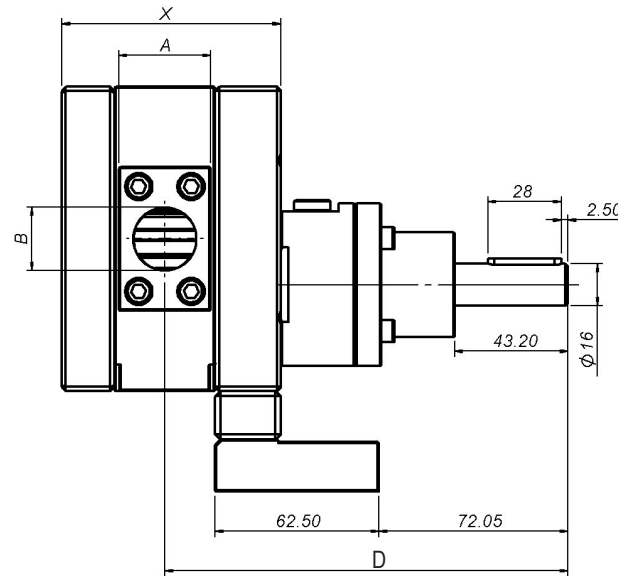
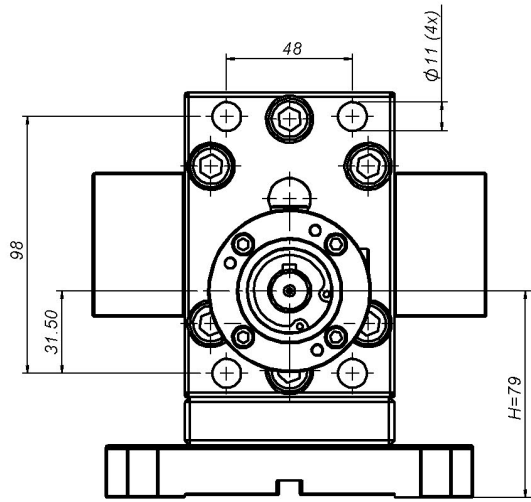
## Available options / accessories

- Pump available in ATEX certified version
- Product fittings on request
- Calibration certificate

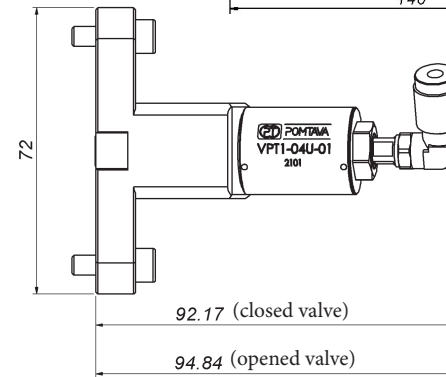
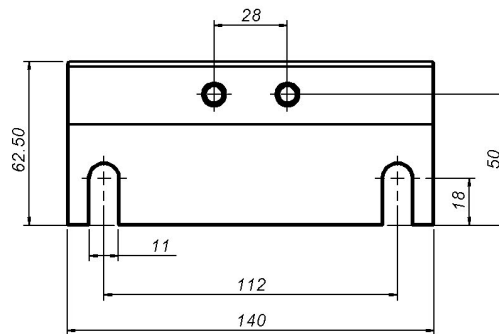
# Definition / Pump options

	3610	-3	-1	/	A	/	6.0	/	S	/	T2	/	EA	/	16	/	12	/	G		
<b>I/O location</b>																					
Inlet/outlet on the sides of the pump		-3																			
<b>Pump flushability</b>																					
<b>Without flushing</b>			-1																		
With flushing			-2																		
<b>Rotation direction</b>																					
<b>Clockwise rotation</b>					A																
<b>Cylinder capacity</b>																					
6.0 cc/rev							6.0														
10.0 cc/rev							10.0														
16.0 cc/rev							16.0														
22.0 cc/rev							22.0														
<b>Operation clearance</b>																					
Reduced clearance, for low viscosity products													F								
<b>Standard clearance, for the vast majority of products</b>													S								
Increased clearance, for high viscosity or highly filled products													J								
<b>Surface treatment</b>																					
<b>Without treatment</b>																					
ADLC (Amorphous Diamond Like Carbon)													T2								
<b>Sealing system</b>																					
<b>Lip seals + liquid barrier</b>													EA								
Lip seal + teflon packing													EB								
<b>Drive shaft diameter</b>																					
Shaft $\varnothing$ 16mm with 5mm key																				16	
<b>Product connection</b>																					
Output G1/2 on the side of the middle plate																					12
<b>Modification for difficult products*.</b>																					
<b>Without modification</b>																					
With modification (can be G or Gx depending on the type of modification)																					Gx

\*To be defined with Pomtava  
**Bold line = standard Pomtava**



H=51\*



Flow rate (cc/rev)	6.0	10.0	16.0	22.0
X (mm)	55.5	62.5	73.0	83.5
Z (mm)	20.25	34.75	25	35
A (mm)	20	30	35	35
B	G 1/4"	G 1/2"	G 1/2"	G 3/4"
C (mm)	50	50	55	55
D (mm)	139.65	143.20	148.40	153.88