

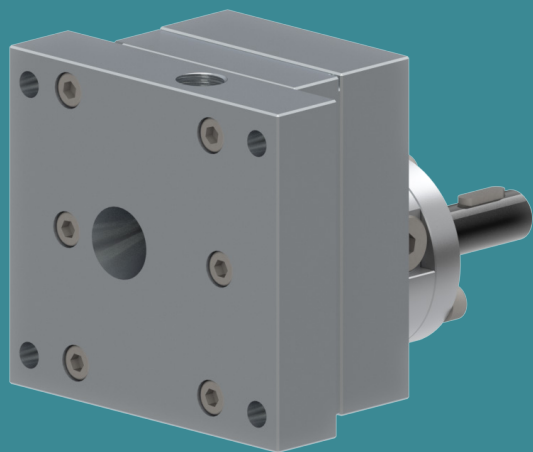


POMTAVA

METERING GEAR PUMPS

DATA SHEET

2610-2-1



Available flow rates (cc/rev)

1.2 / 2.4 / 3.0

6.0 / 10.0

Application fields

Silicones, glues, elastomers, polyurethanes, various resins, various hardeners, pigments, polyesters, epoxy, etc.

Strong points

- All parts are in tempered stainless steel
- Maximum reduction of «dead zones» allowing for better flushing
- Sealing option quickly interchangeable
- Strong, coated drive shaft, held in place with 2 bearings and a axial thrust
- Centering pins making pump assembly easier and increasing its accuracy

Technical data

- Pump to be flanged to a follower plate
- Sealingsystem: Lip seals and liquid barrier (26KA)
- Rotation speed: From 10min⁻¹ to 200min⁻¹, depending on the product involved
- Flow rate range: From 0.012 l/min to 2 l/min (depending on pump size)
- Standard direction of rotation: Clockwise rotation (A)
- Allowed outlet pressure: Max. 100 bar
- Input and output: Inlet ø18mm tapered at the back, outlet G1/4" on the side of the cover
- Drive shaft diameter: Ø 12mm with 4mm key

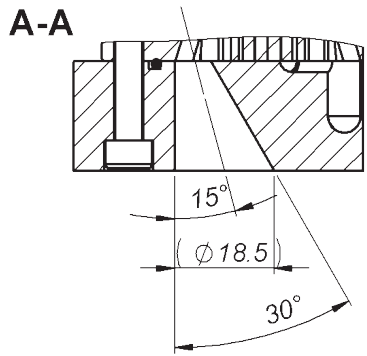
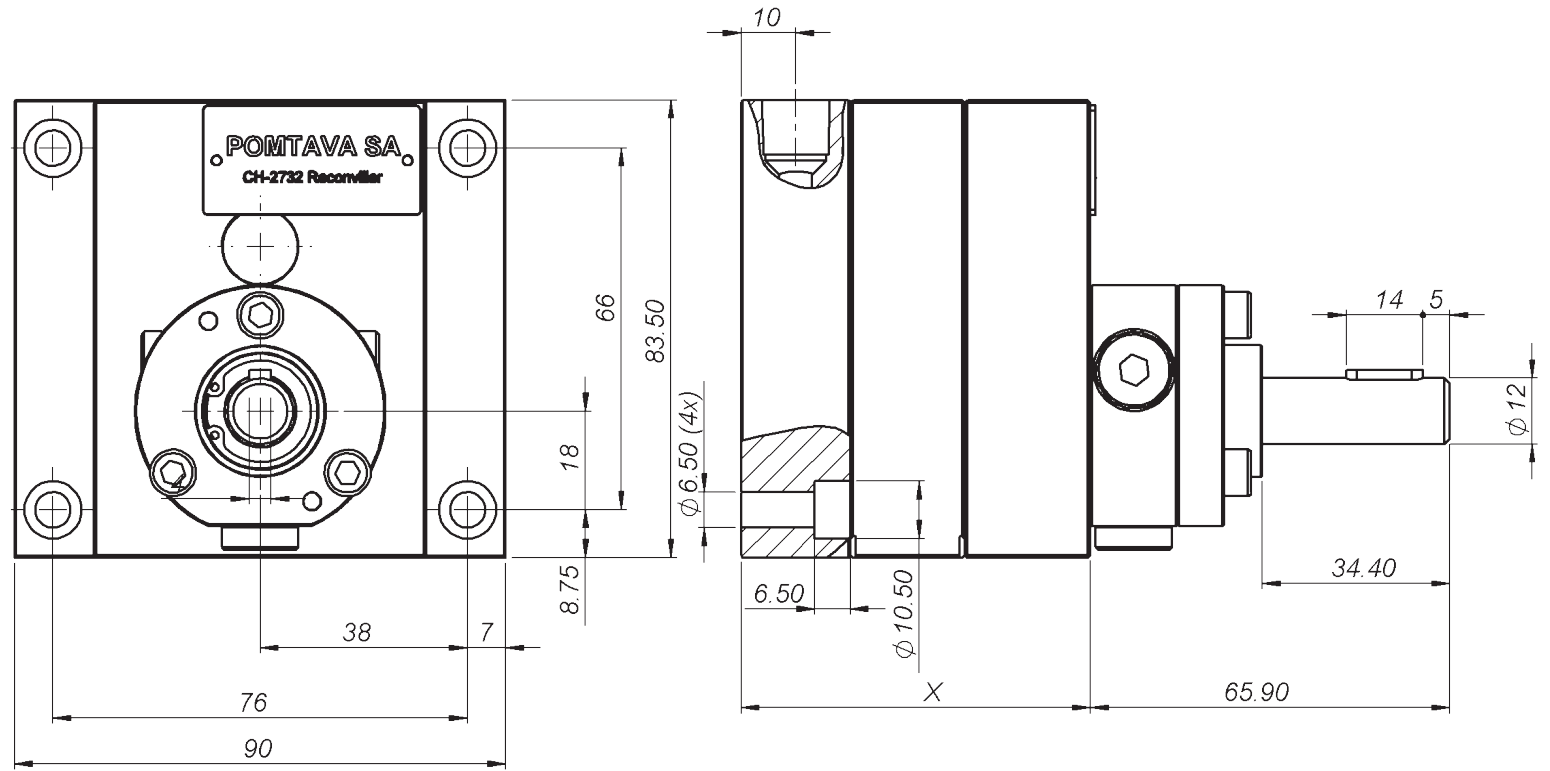
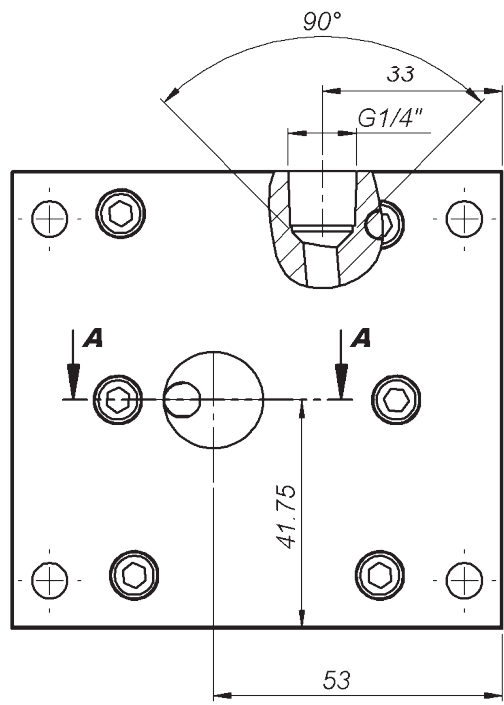
Available options / accessories

- Pump available in ATEX certified version
- Product fittings on request
- Calibration certificate

Definition / Pump options

	2610	-2-1	/	A	/	3.0	/	S	/	T2	/	KA	/	12	/	14	/	HZ	/	G
I/O location																				
In at the back and out on the side of the pump		-2-1																		
Rotation direction																				
Clockwise rotation				A																
Clockwise rotation + Anticlockwise rotation				AZ																
Cylinder capacity																				
1.2 cc/rev						1.2														
2.4 cc/rev						2.4														
3.0 cc/rev						3.0														
6.0 cc/rev						6.0														
10.0 cc/rev						10.0														
Operation clearance																				
Reduced clearance, for low viscosity products										F										
Standard clearance, for the vast majority of products										S										
Increased clearance, for high viscosity or highly filled products										J										
Special clearance, specific to a special product										H										
Surface treatment																				
Without treatment																				
ADLC (Amorphous Diamond Like Carbon)										T2										
Sealing system																				
Lip seals + liquid barrier												KA								
Lip seal + teflon packing												EB								
Drive shaft diameter																				
Shaft ø12mm with 4mm key														12						
Shaft ø10mm with 3mm key														10						
Product connection																				
Outlet G1/4" on the cover																14				
Heating option																				
Without heating option																				
Pump prepared for 2 heating elements ø10mm, length 40mm + 2 housings for PT100 sensor																				HZ
Modification for difficult products*.																				
Without modification																				
With modification (can be G or Gx depending on the type of modification)																				Gx

*To be defined with Pomtava
Bold line = standard Pomtava



Flow rate (cc/rev)	1.2	1.8	2.4	3.0	10.0
X (mm)	47.2	51.4	53.5	64.0	78.0