

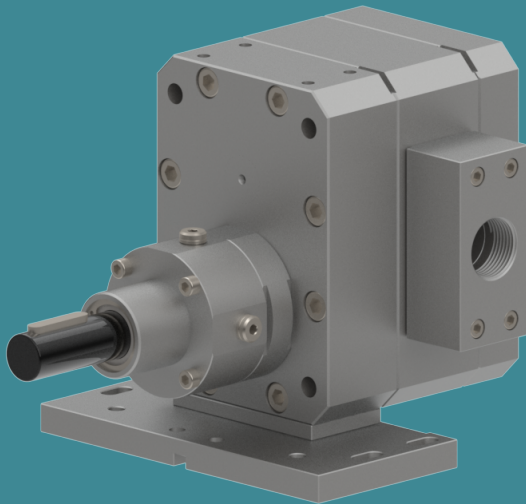


POMTAVA

METERING GEAR PUMPS

DATA SHEET

4610-3-1



Available flow rates (cc/rev)
35.0 / 50.0 / 70.0 / 100.0

Application fields

Silicones, glues, elastomers, polyurethanes, various resins, various hardeners, pigments, polyesters, epoxy, etc.

Strong points

- All parts are in tempered stainless steel
- Maximum reduction of «dead zones» allowing for better flushing
- Sealing option quickly interchangeable
- Strong, coated drive shaft, held in place with 2 bearings and a axial thrust
- Centering pins making pump assembly easier and increasing its accuracy

Technical data

- Sealingsystem: Lip seals and liquid barrier (36EA)
- Rotation speed: From 10min⁻¹ to 200min⁻¹, depending on the product involved
- Flow rate range: From 0.06 l/min to 4.4 l/min (depending on pump size)
- Standard direction of rotation: Clockwise rotation (A)
- Allowed outlet pressure: Max. 100 bar (22cc/rev max. 50bar)
- Inlet and outlet ports: On the intermediate plate, G1/4" (6.0cm³/rev), G1/2" (10 + 16 cm³/rev), G3/4" (22cm³/rev)
- Drive shaft diameter: Ø 16mm with 5mm key

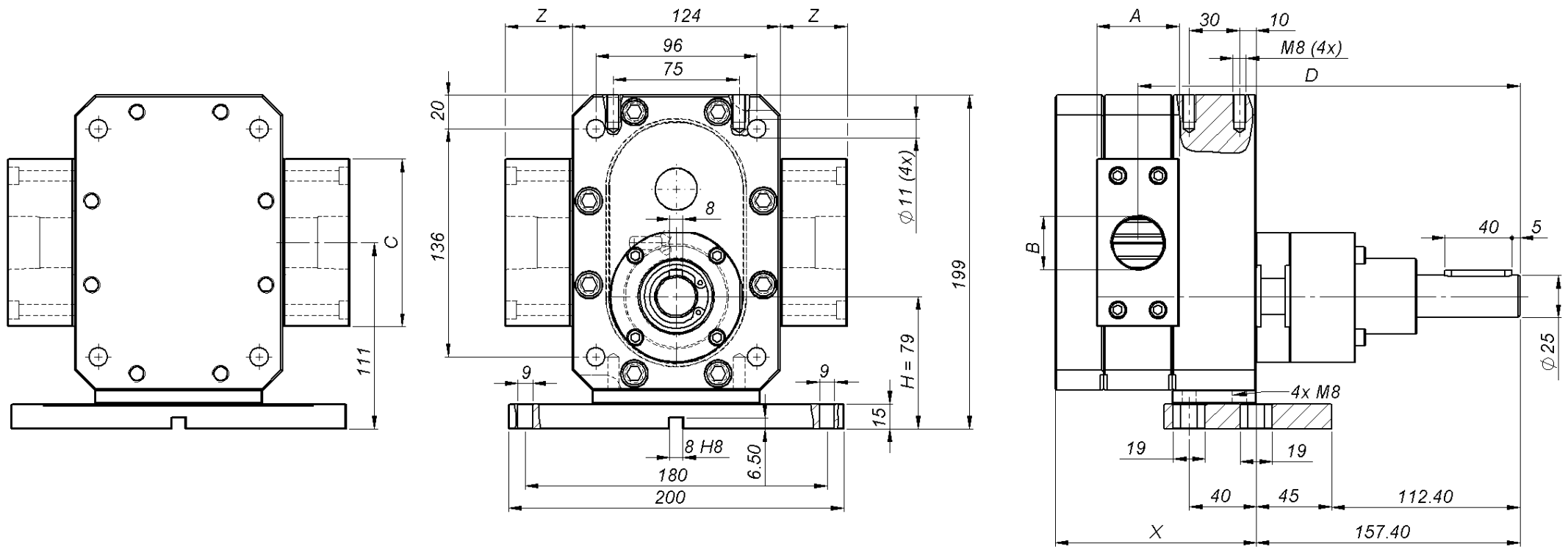
Available options / accessories

- Pump available in ATEX certified version
- Product fittings on request
- Calibration certificate

Definition / Pump options

	4610	-3	-1	-2	/ A	/ 35.0	/ S	/ T2	/ KAR	/ 25	/ 1	/ HZ	/ G
I/O location													
Inlet/outlet on the sides of the pump													
	-3												
Pump flushability													
Without flushing													
With flushing	-2												
Alternative*													
Reinforced model for pressure →100 bar	-2												
Rotation direction													
Clockwise rotation													
Anticlockwise rotation	Z												
Clockwise rotation + Anticlockwise rotation	AZ												
Cylinder capacity													
35.0 cc/rev													
50.0 cc/rev	50.0												
70.0 cc/rev	70.0												
100.0 cc/rev	100.0												
Operation clearance													
Reduced clearance, for low viscosity products													
Standard clearance, for the vast majority of products													
Increased clearance, for high viscosity or highly filled products	J												
Surface treatment													
Without treatment													
ADLC (Amorphous Diamond Like Carbon)	T2												
Sealing system													
Lip seals + liquid barrier													
	KAR												
Drive shaft diameter													
Shaft ø16mm with 8mm key													
	25												
Product connection													
Output G1" on the side of the middle plate													
	1												
Heating option													
Without heating option													
Pump prepared for 2 heating elements ø10mm, length 40mm + 2 housings for PT100 sensor	HZ												
Modification for difficult products*.													
Without modification													
With modification (can be G or Gx depending on the type of modification)	Gx												

*To be defined with Pomtava
Bold line = standard Pomtava



Flow rate (cc/rev)	35.0	50.0	70.0	100.0
X (mm)	99.50	108.30	119.98	137.60
Z (mm)	35	40	40	40
A (mm)	40	49	49	49
B	G 1"	G 1"	G 1"	G 1"
C (mm)	100	100	100	100
D (mm)	218	222.25	227.9	236.7