

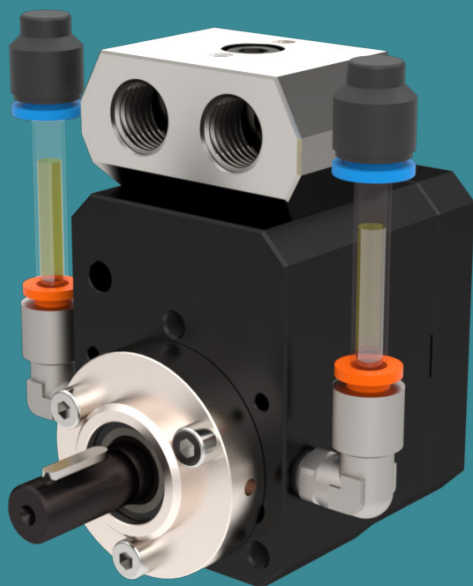


POMTAVA

METERING GEAR PUMPS

DATA SHEET

RPPT2



Available flow rates (cc/rev)

0.3 / 0.6 / 1.2

3.0 / 4.5 / 6.0

Application fields

Water- or solvent-based paint, hardener and many other applications.

Strong points

- All parts are made of hardened stainless steel
- Maximum reduction in dead zones for improved pump rinsing
- Lightweight, compact design
- Ideal for on-board paint systems
- Very good rinsing capacity thanks to the shaft rinse function
- Centring pins for easy pump assembly and increased accuracy
- RPPT-4-3 pump cover with flushing holes for adding a optional bypass block.

Technical data

- Shaft sealing : Lip seal with additional liquid barrier.
- Rotation speed : From 10min⁻¹ to 200min⁻¹, depending on the product conveyed
- Flow rate range: 0.003 l/min to 1.2 l/min (depending on displacement).
- Surface treatment: ADLC (Amorph Diamond-Like Carbon) on all parts in contact with the liquid.
- Standard direction of rotation: Clockwise rotation (A)
- Temperature: Max. 60°C
- Permissible outlet pressure: Max. 15 bar
- Nominal accuracy: $\pm 3\%$ of nominal value (depending on fluid and pressure conditions)
- Repeatability : 0.5% of previous value
- Inlet and outlet ports: 2x \varnothing 4mm on pump body.
Supplied with G1/4" connection block
- Drive shaft diameter: \varnothing 10mm with 3mm key

Available options / accessories

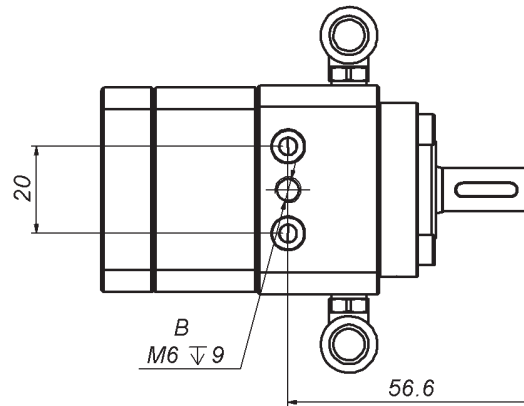
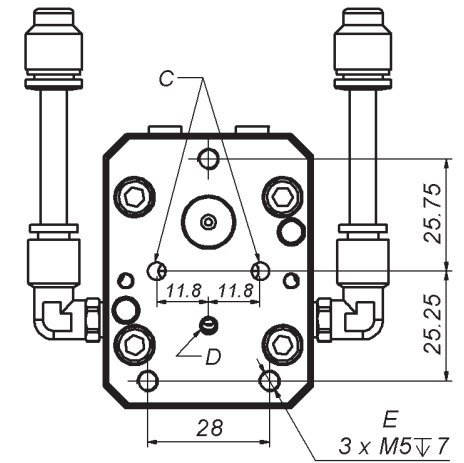
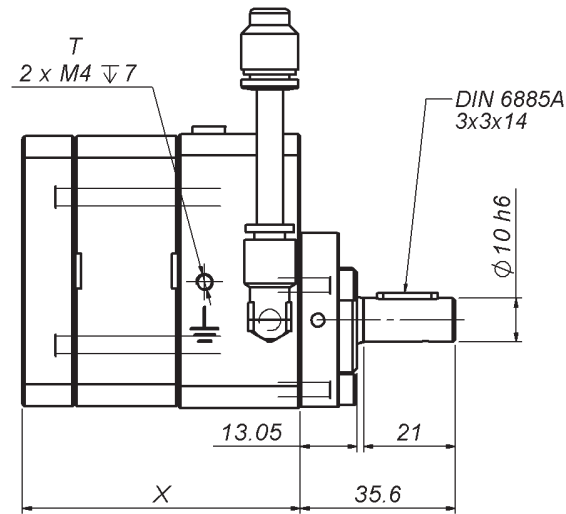
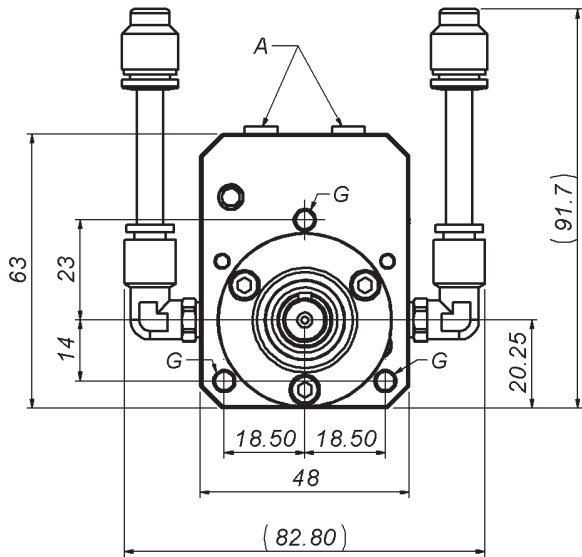
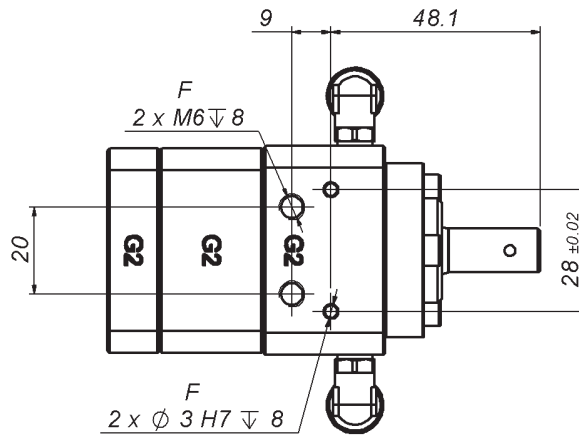
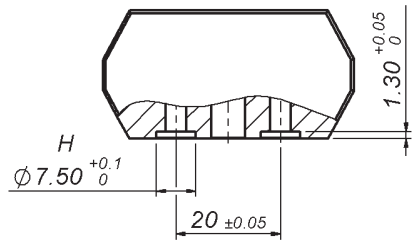
- Pump stand on request
- Pump available in ATEX certified version
- Bypass block with flush and dump function
- Hose fittings on request
- Calibration certificate
- Pressure transmitters
- Direct connection flowmeters

Definition / Pump options

	RPPT2	-4	-1	/	Z	/	1.2	/	S	/	T2	/	PE	/	10	/	4	/	NCLR
I/O location																			
I/O on the pump body		-4																	
Pump flushability																			
Without flushing			-1																
With flushing			-2																
With flushing with solvent injection			-3																
Rotation direction																			
Anticlockwise rotation					Z														
Clockwise rotation + Anticlockwise rotation					AZ														
Cylinder capacity																			
0.3 cc/rev*							0.3												
0.6 cc/rev*							0.6												
1.2 cc/rev*							1.2												
3.0 cc/rev							3.0												
4.5 cc/rev							4.5												
6.0 cc/rev							6.0												
Operation clearance																			
Standard clearance, for the vast majority of products									S										
Surface treatment																			
ADLC (Amorphous Diamond Like Carbon)										T2									
Sealing system																			
Lip seals + liquid barrier													PE						
Drive shaft diameter																			
Shaft ø10mm with 3mm key															10				
Product connection																			
Connection block for 2 fittings G1/4"																			14
Connection block including housing for pressure transmitters																			W
Without connecting block																			4
Angled control level																			
Level control gauge left/right																			NCLR
Level control gauge right																			NCR
Level control gauge left																			NCL

* Version with solvent injection (-3) not available

Bold line = standard Pomtava



Flow rate (cc/rev)	0.3	0.6	1.2	3.0	4.5	6.0
X (mm)	42.85	45.7	51.3	56.4	64.4	63.8

Accessories

