



POMTAVA

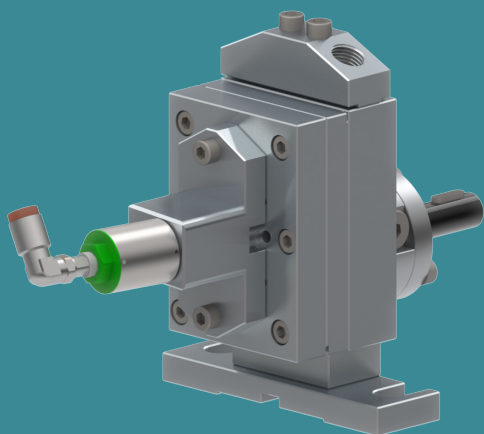
METERING GEAR PUMPS

DATA SHEET

2610-4-1



2610-4-2



Available flow rates (cc/rev)

1.2 / 2.4 / 3.0

6.0 / 10.0

Application fields

Silicones, glues, elastomers, polyurethanes, various resins, various hardeners, pigments, polyesters, epoxy, etc.

Strong points

- All parts are in tempered stainless steel
- Maximum reduction of «dead zones» allowing for better flushing
- Sealing option quickly interchangeable
- Strong, coated drive shaft, held in place with 2 bearings and a axial thrust
- Centering pins making pump assembly easier and increasing its accuracy
- Pump cover 2610-4-2 with flushing holes for optional bypass block

Technical data

- Sealingsystem: Lip seals and liquid barrier (26KA)
- Rotation speed: From 10min⁻¹ to 200min⁻¹, depending on the product involved
- Flow rate range: From 0.012 l/min to 2 l/min (depending on pump size)
- Standard direction of rotation: Clockwise rotation (A)
- Allowed outlet pressure: Max. 100 bar (10cc/rev max. 50bar)
- Input and output: 2x Ø 6mm on the pump cover. Delivered with connecting block G1/4"
- Drive shaft diameter: Ø 12mm with 4mm key
- Drive shaft height: H=51mm
- Fixing distance: L=80mm

Available options / accessories

- Support H=40mm / L=55mm
- Pump available in ATEX certified version
- Bypass block (2610-4-2)
- Product fittings on request
- Calibration certificate
- Pressure sensors
- Pressure regulators

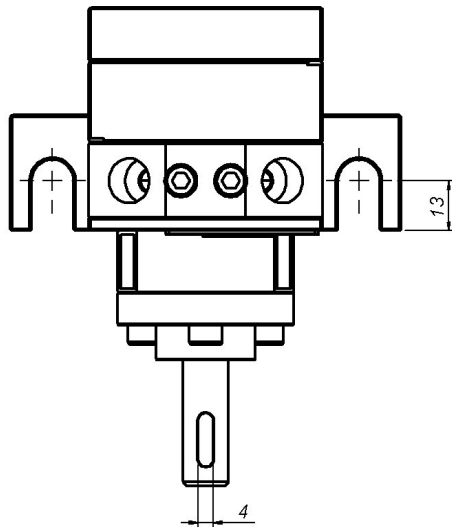
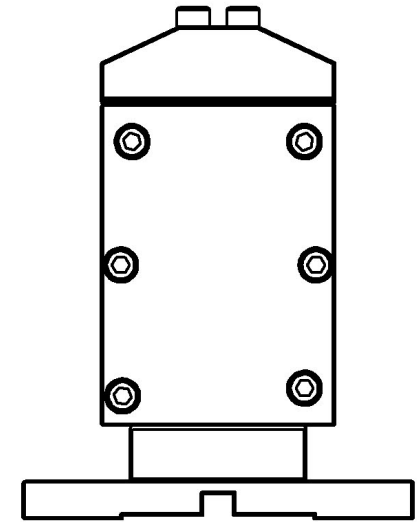
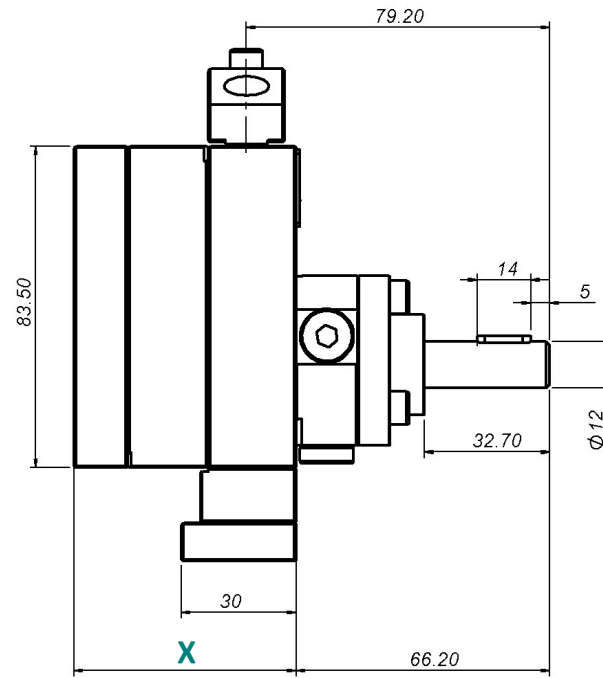
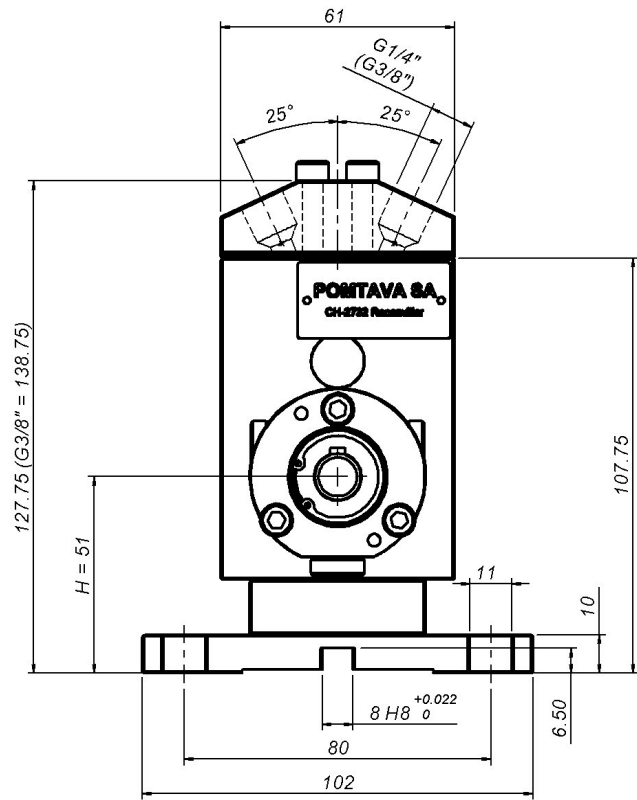
Definition / Pump options

	2610	-4	-1	-2	/	A	/	3.0	/	S	/	R	/	T2	/	KA	/	12	/	14	/	HZ	/	G
I/O location																								
I/O on the pump body		-4																						
Pump flushability																								
Without flushing			-1																					
With flushing			-2																					
Alternative*																								
Reinforced model for pressure →100 bar																								
Rotation direction																								
Clockwise rotation						A																		
Anticlockwise rotation						Z																		
Clockwise rotation + Anticlockwise rotation						AZ																		
Cylinder capacity																								
1.2 cc/rev								1.2																
2.4 cc/rev								2.4																
3.0 cc/rev								3.0																
6.0 cc/rev								6.0																
10.0 cc/rev								10.0																
Operation clearance																								
Reduced clearance, for low viscosity products																								F
Standard clearance, for the vast majority of products																								S
Increased clearance, for high viscosity or highly filled products																								J
Special clearance, specific to a special product																								H
Bypass option																								
Without Bypass																								
With Bypass																								R
Surface treatment																								
Without treatment																								
ADLC (Amorphous Diamond Like Carbon)																								T2
Sealing system																								
Lip seals + liquid barrier																								KA
Lip seal + teflon packing																								EB
Drive shaft diameter																								
Shaft ø12mm with 4mm key																								12
Shaft ø10mm with 3mm key																								10
Product connection																								
Connection block for 2 fittings G1/4"																								14
Connection block for 2 fittings G3/8"																								38
Connection block including housing for pressure transmitters																								W
Heating option **																								
Without heating option																								
Pump prepared for 2 heating elements ø10mm, length 40mm + 2 housings for PT100 sensor																								HZ
Modification for difficult products*.																								
Without modification																								
With modification (can be G or Gx depending on the type of modification)																								Gx

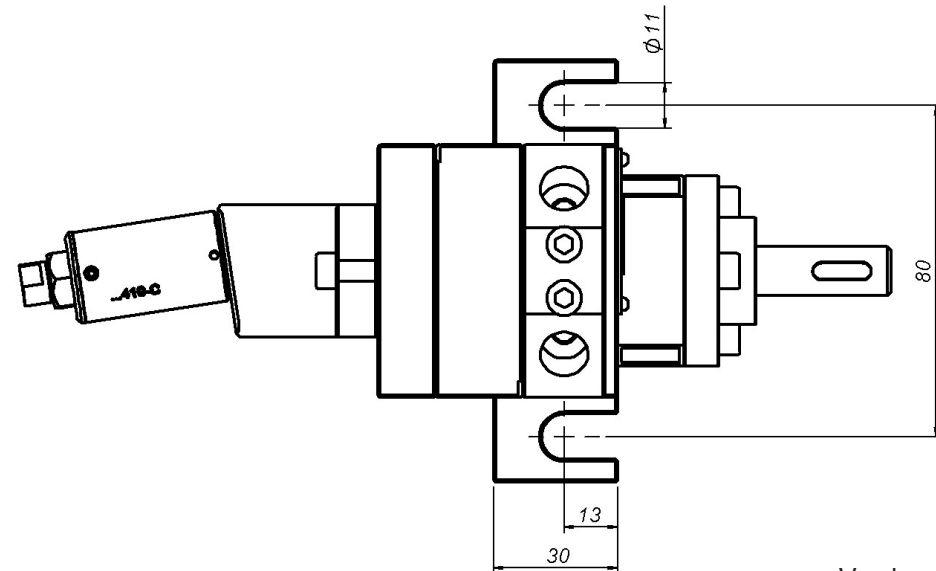
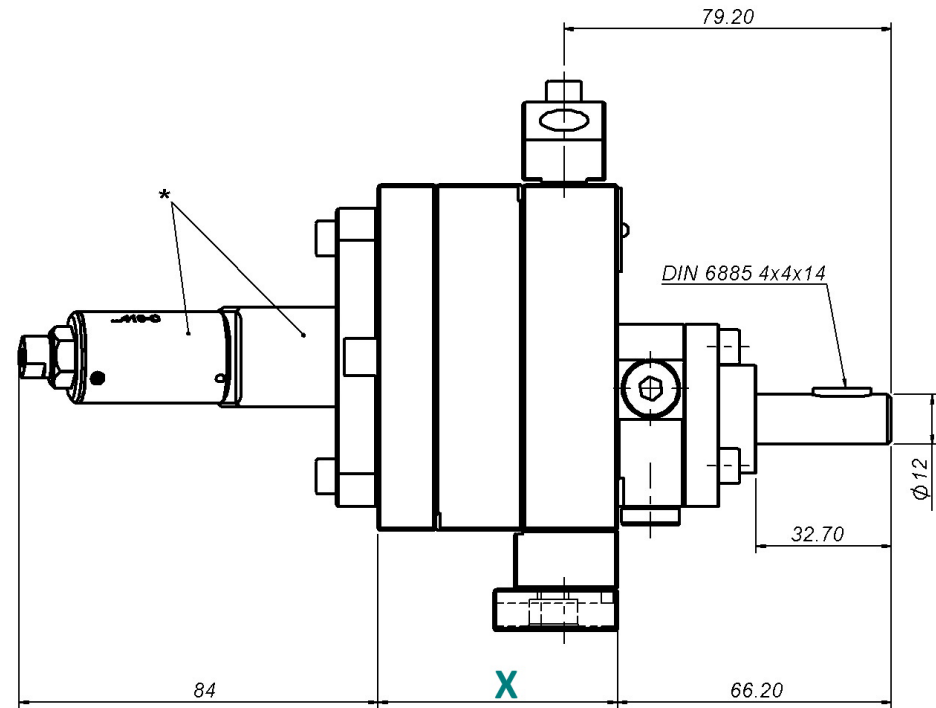
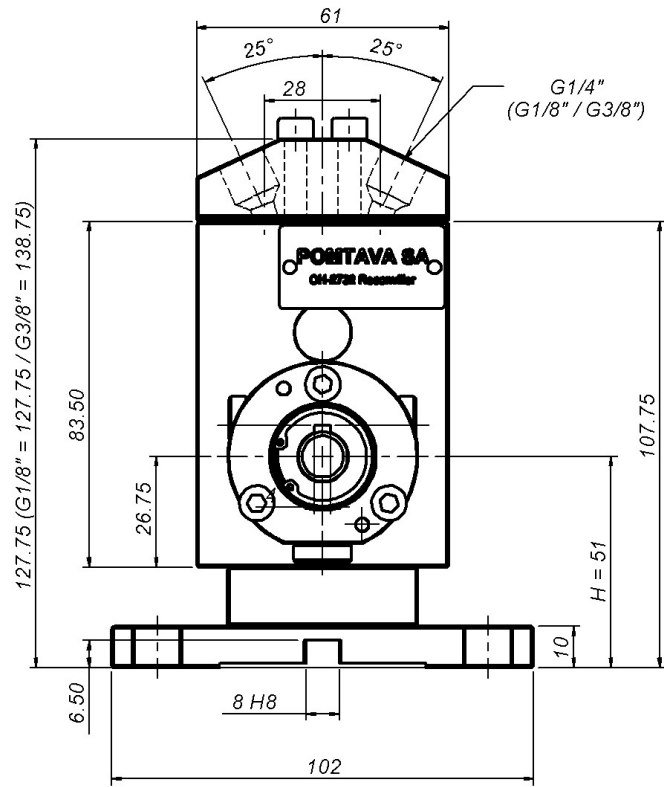
*To be defined with Pomtava

** Only 2610-4-1

Bold line = standard Pomtava



Flow rate (cc/rev)	1.2	2.4	3.0	6.0	10.0
X (mm)	41.2	45.4	47.5	58.0	72.0



Flow rate (cc/rev)	1.2	2.4	3.0	6.0	10.0
X (mm)	41.2	45.4	47.5	58.0	72.0