

Metering gear pumps

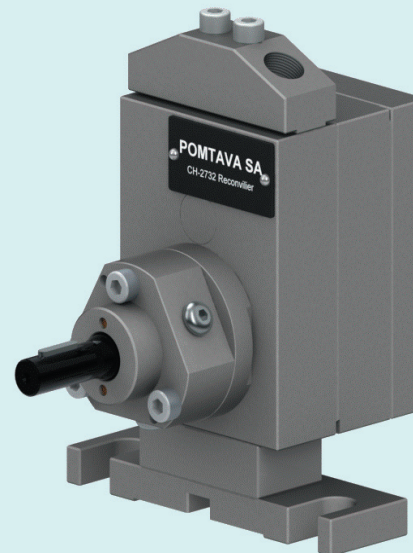
2618-4-2

Application fields

This pump is mainly fitted for water or solvant based automotive and industrial paint.

Overview

- All parts are in tempered stainless steel
- New sealing technology combining double lips seals and liquid barrier
- Strong, coated drive shaft, held in place with 3 bearings and a axial thrust
- Centering pins making pump assembly easier and increasing its accuracy
- Ready to mount a bypass system, with 2 flushing holes in the rear plate (**bypass block is compulsory and available as option**)
- Designed to meter products from 20 up to 200 mPas
- Available with two types of connecting block, with or without threadings for pressure sensors.



Technical data

Sealing :	Double lips seal and liquid barrier (FAR)
Rotation speed :	From 10min ⁻¹ to 120min ⁻¹
Standard rotation :	Clockwise rotation (A)
Temperature :	Max. 135°C
Output pressure :	Max. 15 bars
Input/Output :	2 holes Ø 6mm on the body of the pump. Delivered with a connecting block G1/4" (see picture above). For other block, see the available option.
Driving shaft diameter :	Ø10mm with a 3mm key
Drive shaft height :	H=51mm

Available outputs

1.2cc/rev 2.4cc/rev 3.0cc/rev 6.0cc/rev 10.0cc/rev

Options

- **(T2)** Entirely treated with ADLC
- **(H40)** Stand H=40mm
- **(Z)** Counterclockwise rotation
- **(AZ)** Clockwise and counterclockwise rotation
- **(BB)** Bypass block
- **(W)** Connecting block I/O G1/4" for 2 pressure sensors M28x1.5 or G1/2"
- **(AB38)** Connecting block G3/8"

