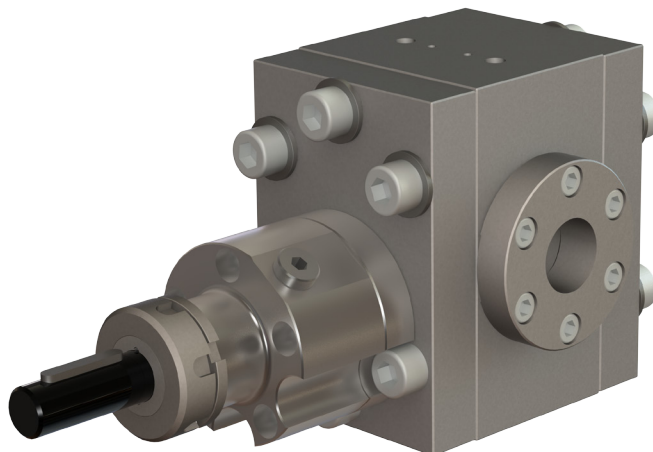


## High pressure metering gear pump



### Application fields

Products with medium to high viscosity. Suited for resins, glues, greases, silicones, mastics, etc.

### Technical data

<b>Rotation speed :</b>	up to 150 rpm <i>(depending on product involved)</i>
<b>Metering repeatability :</b>	< than 0.5 % of actual value
<b>Input/Feeding pressure :</b>	up to 250 bars
<b>Output pressure :</b>	up to 250 bars
<b>Admissible viscosity :</b>	1000 to 1'000'000 mPas
<b>Direction of rotation :</b>	Clockwise and anti-clockwise rotation
<b>Pump material :</b>	Tempered stainless steel
<b>Working temperature :</b>	max. 135 °C

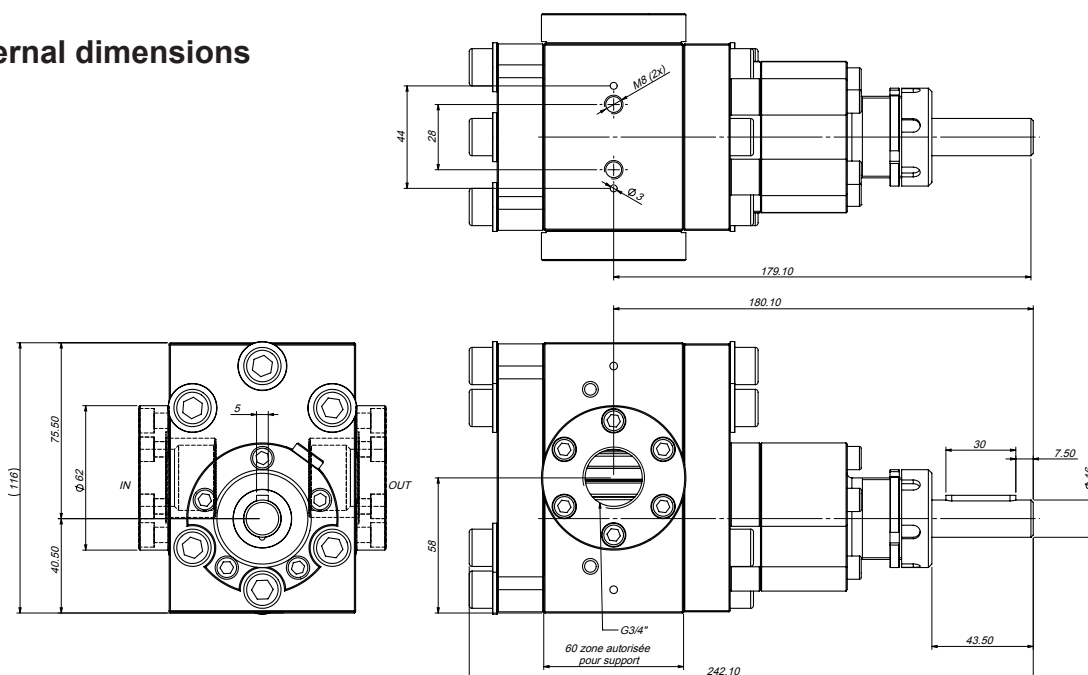
### Available outputs

10 cc/rev	16 cc/rev
-----------	-----------

### Available options

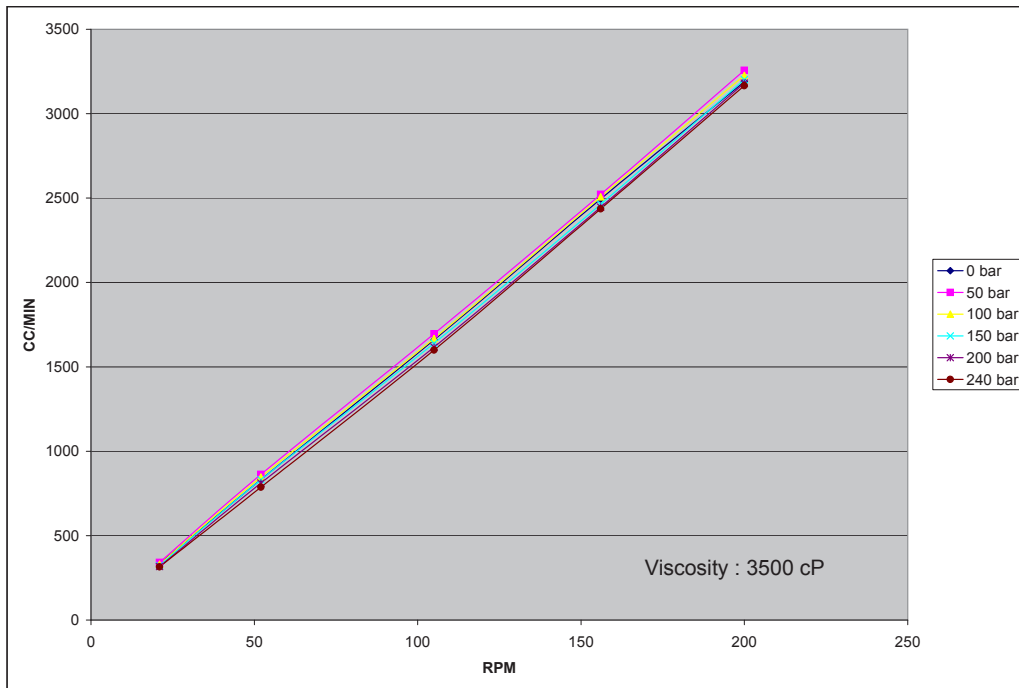
- **ADLC** (Amorphous Diamond-Like Carbon) surface treatment for abrasive fillers
- **Pump stand** according customer needs
- **Heatable version** with heating cartridges and temperature sensors

### External dimensions



# High pressure metering gear pump

## Measured output depending on pump rotation speed and deltaP



## Average needed torque depending on pressure differential

