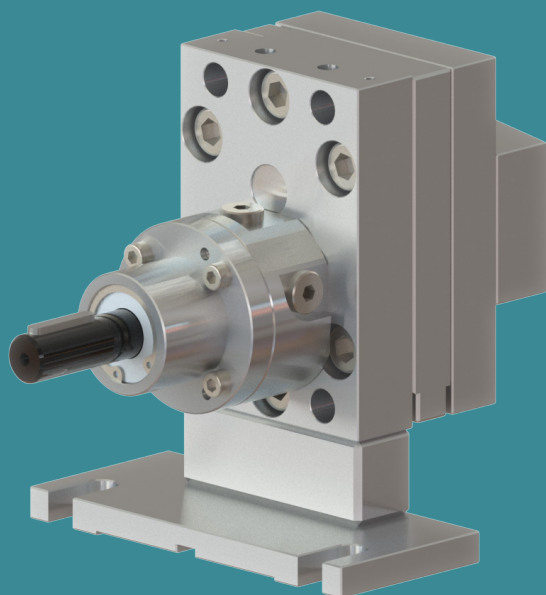




POMTAVA

METERING GEAR PUMPS

## DATA SHEET 3610-1-1



Available flow rates (cc/rev)

6.0 / 10.0 / 16.0 / 22.0

### Application fields

Silicones, glues, elastomers, polyurethanes, various resins, various hardeners, pigments, polyesters, epoxy, etc.

### Strong points

- All parts are in tempered stainless steel
- Maximum reduction of «dead zones» allowing for better flushing
- Sealing option quickly interchangeable
- Strong, coated drive shaft, held in place with 2 bearings and a axial thrust
- Centering pins making pump assembly easier and increasing its accuracy

### Technical data

- Sealingsystem: Lip seals and liquid barrier (36EA)
- Rotation speed: From 10min<sup>-1</sup> to 200min<sup>-1</sup>, depending on the product involved
- Flow rate range: From 0.06 l/min to 4.4 l/min (depending on pump size)
- Standard direction of rotation: Clockwise rotation (A)
- Allowed outlet pressure: Max.100 bar (22cc/rev max. 50bars)
- Input and output: 2x Ø 15mm on the pump cover. Delivered with connecting block G3/8"
- Drive shaft diameter: Ø 16mm with 5mm key
- Drive shaft height: H=79mm
- Fixing distance: L=112mm

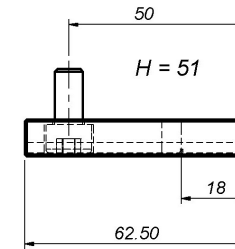
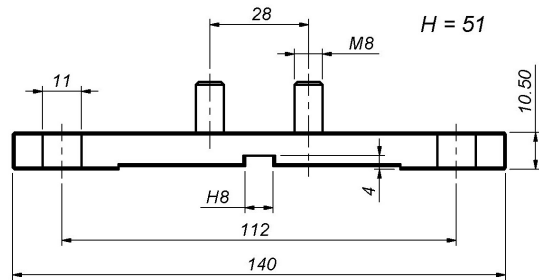
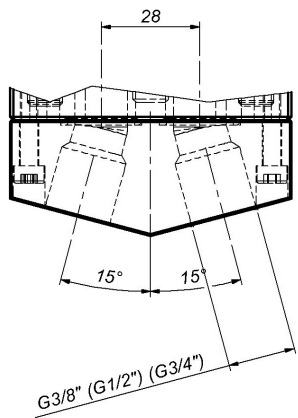
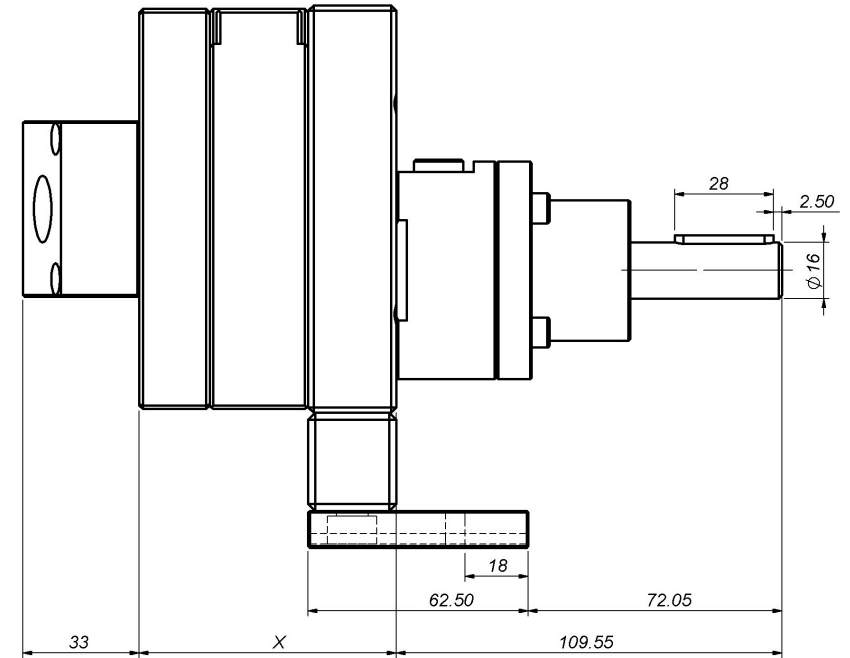
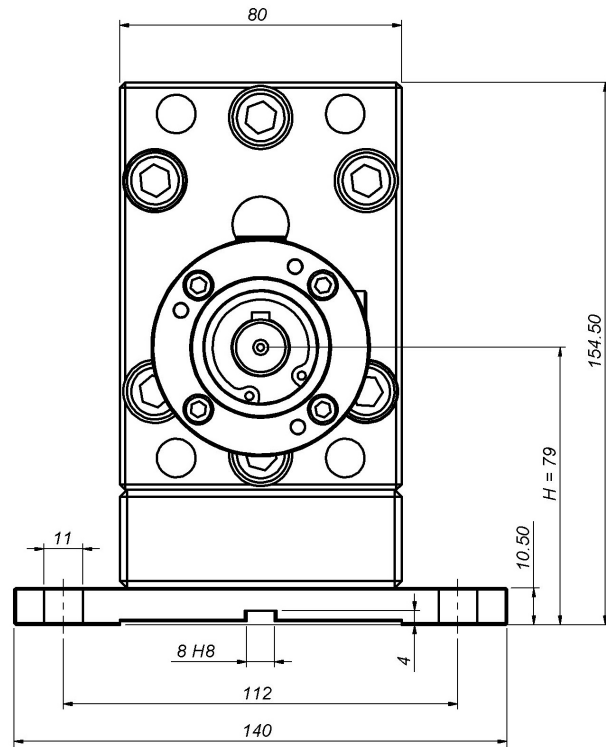
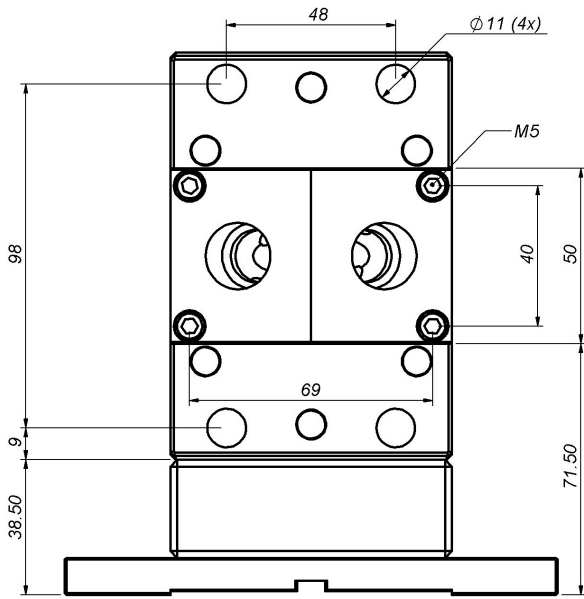
### Available options / accessories

- Stand for drive shaft height H=51mm (kompatibel Group 2)
- Stand for drive shaft height H=135mm (kompatibel Group 4)
- Pump available in ATEX certified version
- Product fittings on request
- Calibration certificate
- Pressure sensors
- Pressure regulators

# Definition / Pump options

	3610	-1-1	-2	/	A	/	6.0	/	S	/	T2	/	EA	/	16	/	38	/	HZ	/	G
<b>I/O location</b>																					
I/O at the back of the pump		-1-1																			
<b>Alternative*</b>																					
Reinforced model for pressure →100 bar																					
<b>Rotation direction</b>																					
<b>Clockwise rotation</b>					A																
Anticlockwise rotation					Z																
Clockwise rotation + Anticlockwise rotation					AZ																
<b>Cylinder capacity</b>																					
6.0 cc/rev							6.0														
10.0 cc/rev							10.0														
16.0 cc/rev							16.0														
22.0 cc/rev							22.0														
<b>Operation clearance</b>																					
Reduced clearance, for low viscosity products													F								
<b>Standard clearance, for the vast majority of products</b>													S								
Increased clearance, for high viscosity or highly filled products													J								
<b>Surface treatment</b>																					
<b>Without treatment</b>																					
ADLC (Amorphous Diamond Like Carbon)													T2								
<b>Sealing system</b>																					
<b>Lip seals + liquid barrier</b>													EA								
Lip seal + teflon packing													EB								
<b>Drive shaft diameter</b>																					
Shaft ø16mm with 5mm key															16						
<b>Product connection</b>																					
<b>Connection block for 2 fittings G3/8"</b>																					38
Connection block for 2 fittings G1/2"																					12
Connection block for 2 fittings G3/4"																					34
Connection block including housing for pressure transmitters																					W
<b>Heating option</b>																					
<b>Without heating option</b>																					
Pump prepared for 2 heating elements ø10mm, length 40mm + 2 housings for PT100 sensor																					HZ
<b>Modification for difficult products*.</b>																					
<b>Without modification</b>																					
With modification (can be G or Gx depending on the type of modification)																					Gx

\*To be defined with Pomtava  
**Bold line = standard Pomtava**



Flow rate (cc/rev)	6.0	10.0	16.0	22.0
X (mm)	55.0	62.5	73.0	83.5