



POMTAVA

METERING GEAR PUMPS

DATA SHEET

11165



Available flow rates (cc/rev)

0.05 / 0.1 / 0.3 / 0.6 /
1.2 / 1.8 / 2.4 / 3.0

Application fields

Industrial painting, gluing, joint removal, dosing of viscous or loaded products.

Strong points

- All parts made of hardened **stainless steel**
- Design minimises **dead zones** (optimised rinsing)
- **Quickly interchangeable seals**
- Robust treated shaft, mounted on 2 bearings + axial thrust
- Centring pins for precise assembly

Technical data

Flow range	0.003 to 0.6 l/min
Available displacements	0.3 to 6.0 cc/rev
Max. pressure	100 bar (\leq 3.0 cc) / 30 bar (6.0 cc)
Max. temperature	135°C
Max. speed	200 min ⁻¹ (depending on product)
Sealing	Teflon packing
Connection	G1/4" female (standard)
Drive shaft	Ø12 mm with 4 mm key
Direction of rotation	Clockwise (A)

Available options / accessories

Surface treatment	Titanium / ADLC
Direction of rotation	Counterclockwise (Z) / Reversible (AZ)
Operating clearance	Depending on viscosity
Drive shaft	Ø10 mm with flat
Bypass	Possible (1 or 2 rinsing levels)
Connections	G3/8"
Difficult products	Specific modification (to be defined)

Definition / Pump options

11165 / A / 0.3 / S / R / T2 / Var.B / 12 / 14 / G

I/O location

Cast iron body with side I/O

Rotation direction

Clockwise rotation **A**
 Anticlockwise rotation Z
 Clockwise rotation + Anticlockwise rotation AZ

Cylinder capacity

0.3 cc/rev 0.3
 0.6 cc/rev 0.6
 1.2 cc/rev 1.2
 1.8 cc/rev 1.8
 2.4 cc/rev 2.4
 3.0 cc/rev 3.0
 4.5 cc/rev 4.5
 6.0 cc/rev 6.0

Operation clearance

Reduced clearance, for low viscosity products F
Standard clearance, for the vast majority of products S
 Increased clearance, for high viscosity or highly filled products J
 Special clearance, specific to a special product H

Bypass option

Without bypass
 With bypass R

Surface treatment

No treatment
 ADLC (Amorphous Diamond Like Carbon) T2
 ADLC (plates only) PT2
 Full titanium treatment T1
 Titanium treatment (plates only) PT1

Sealing system

Teflon packing Var.B

Drive shaft diameter

Shaft ø12mm with 4mm key 12
 Shaft ø10mm with 3mm key 10

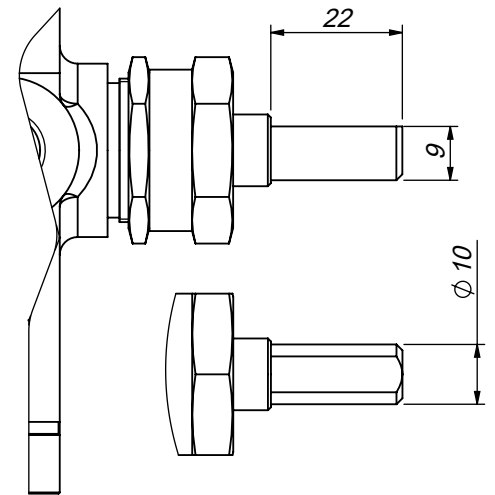
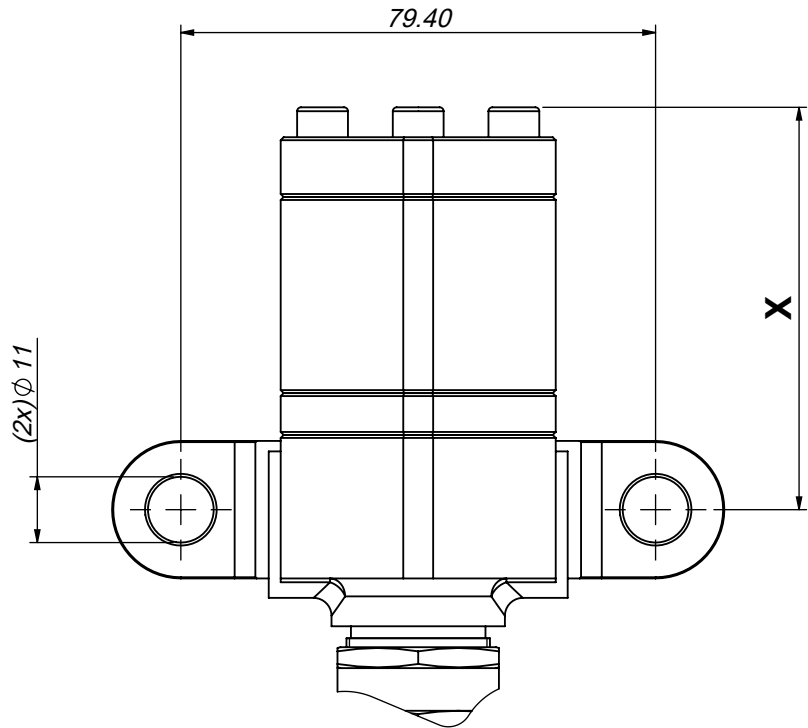
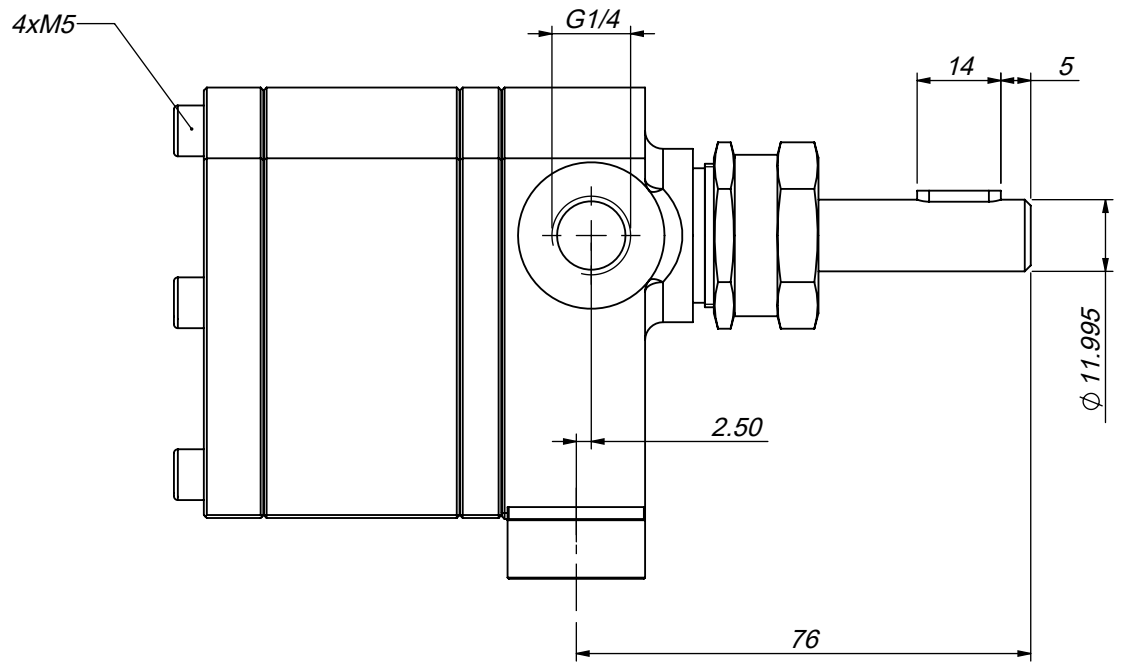
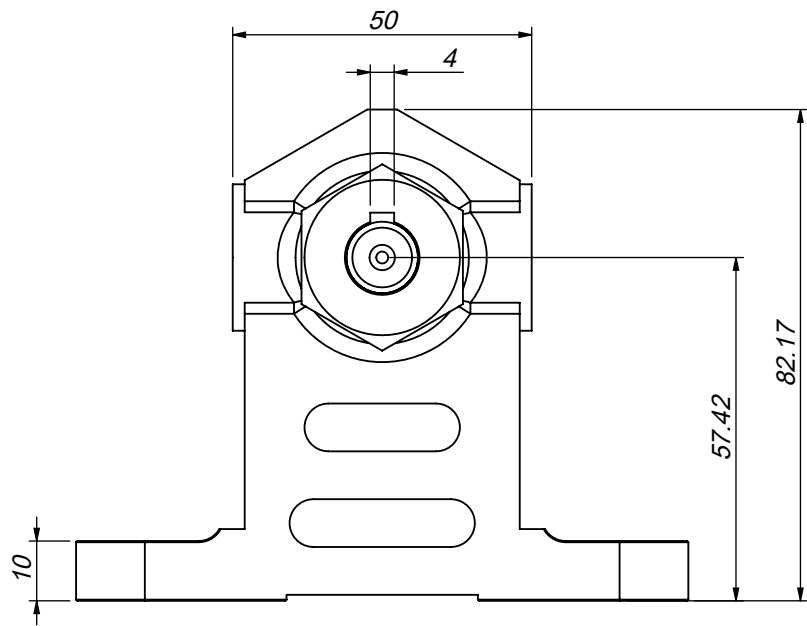
Product connection

2 Anschlüsse G1/4" direkt am Gehäuse 14
 2 Anschlüsse G3/8" direkt am Gehäuse 38

Modification for difficult products*.

Without modification
 With modification (can be G or Gx depending on the type of modification) Gx

*To be defined with Pomtava
Bold line = standard Pomtava



Flow rate (cc/rev)	0.3	0.6	1.2	1.8	2.4	3.0	4.5	6.0
X (mm)	37.35	40.20	45.80	44.40	47.46	50.90	59.10	67.30