

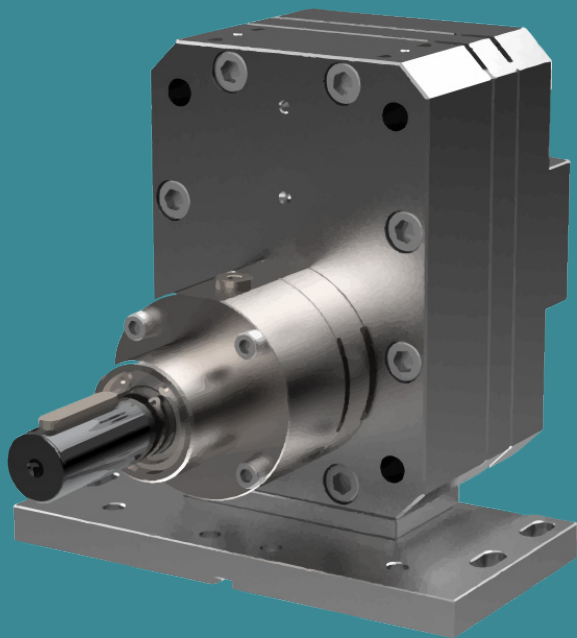


POMTAVA

METERING GEAR PUMPS

DATA SHEET

4610-1-1



Available flow rates (cc/rev)
35.0 / 50.0 / 70.0 / 100.0

Application fields

Silicones, glues, elastomers, polyurethanes, various resins, various hardeners, pigments, polyesters, epoxy, etc.

Strong points

- All parts are in tempered stainless steel
- Maximum reduction of «dead zones» allowing for better flushing
- Sealing option quickly interchangeable
- Strong, coated drive shaft, held in place with 3 bearings and a axial thrust
- Centering pins making pump assembly easier and increasing its accuracy

Technical data

- Sealing system: Lip seals and liquid barrier (46KAR)
- Rotation speed: From 10min^{-1} to 200min^{-1} , depending on the product involved
- Flow rate range: From 0.35 l/min to 20.0 l/min (depending on pump size)
- Standard direction of rotation: Clockwise rotation (A)
- Allowed outlet pressure: Max. 100 bar
- Input and output: 2x $\text{Ø} 15\text{mm}$ on the pump cover. Delivered with connecting block G1"
- Drive shaft diameter: $\text{Ø} 16\text{mm}$ with 5mm key
- Drive shaft height: $H=79\text{mm}$
- Fixing distance: $L=112\text{mm}$

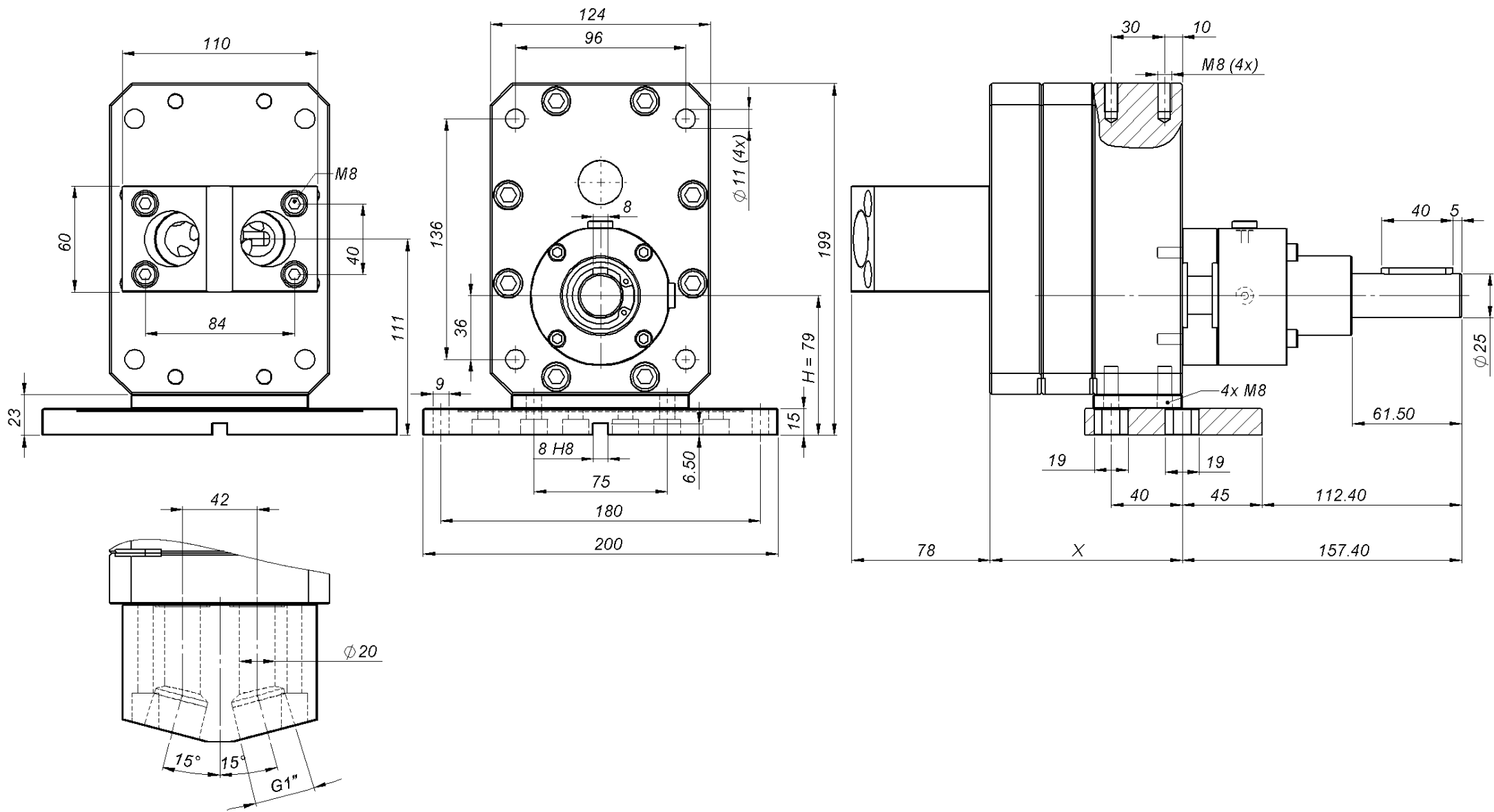
Available options / accessories

- Stand for drive shaft height $H= 135\text{mm}$
- Product fittings on request
- Calibration certificate
- Pressure sensors
- Pressure regulators
- Integrated flow meter

Definition / Pump options

	4610	-1-1	-2	/	A	/	35.0	/	S	/	T2	/	KAR	/	25	/	1	/	HZ	/	G
I/O location																					
I/O at the back of the pump		-1-1																			
Alternative*																					
Reinforced model for pressure →100 bar			-2																		
Rotation direction																					
Clockwise rotation					A																
Anticlockwise rotation					Z																
Clockwise rotation + Anticlockwise rotation					AZ																
Cylinder capacity																					
35.0 cc/rev							35.0														
50.0 cc/rev							50.0														
70.0 cc/rev							70.0														
100.0 cc/rev							100.0														
Operation clearance																					
Reduced clearance, for low viscosity products																					F
Standard clearance, for the vast majority of products																					S
Increased clearance, for high viscosity or highly filled products																					J
Surface treatment																					
Without treatment																					
ADLC (Amorphous Diamond Like Carbon)																					T2
Sealing system																					
Lip seals + liquid barrier																					KAR
Drive shaft diameter																					
Shaft ø25mm with 8mm key																					25
Product connection																					
Connection block for 2 fittings G1"																					1
Heating option																					
Without heating option																					
Pump prepared for 2 heating elements ø10mm, length 40mm + 2 housings for PT100 sensor																					HZ
Modification for difficult products*.																					
Without modification																					
With modification (can be G or Gx depending on the type of modification)																					Gx

*To be defined with Pomtava
Bold line = standard Pomtava



Flow rate (cc/rev)	35.0	50.0	70.0	100.0
X (mm)	99.50	108	119.98	137.60