

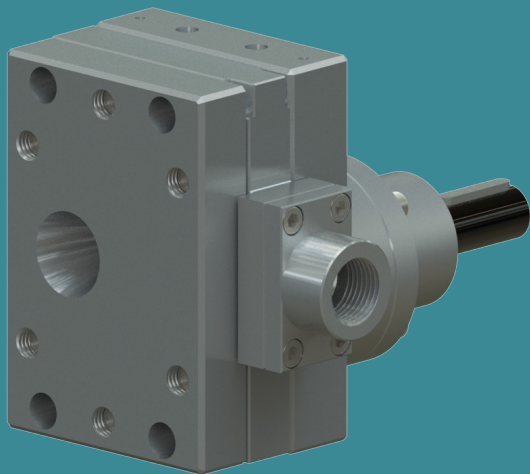


POMTAVA

METERING GEAR PUMPS

DATA SHEET

3610-2-1



Available flow rates (cc/rev)

6.0 / 10.0 / 16.0 / 22.0

Application fields

Silicones, glues, elastomers, polyurethanes, various resins, various hardeners, pigments, polyesters, epoxy, etc.

Strong points

- All parts are in tempered stainless steel
- Maximum reduction of «dead zones» allowing for better flushing
- Sealing option quickly interchangeable
- Strong, coated drive shaft, held in place with 2 bearings and a axial thrust
- Centering pins making pump assembly easier and increasing its accuracy

Technical data

- Pump to be flanged to a follower plate
- Sealingsystem: Lip seals and liquid barrier (36EA)
- Rotation speed: From 10min⁻¹ to 200min⁻¹, depending on the product involved
- Flow rate range: From 0.06 l/min to 4.4 l/min (depending on pump size)
- Standard direction of rotation: Clockwise rotation (A)
- Allowed outlet pressure: Max. 100 bar
- Input and output: Inlet $\varnothing 25.70$ mm tapered at the back, outlet G1/4" on the side of the cover
- Drive shaft diameter: $\varnothing 16$ mm with 5mm key

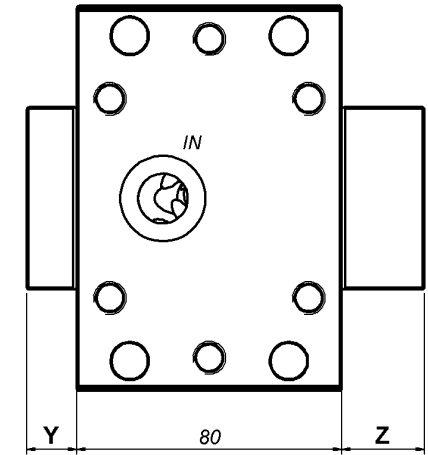
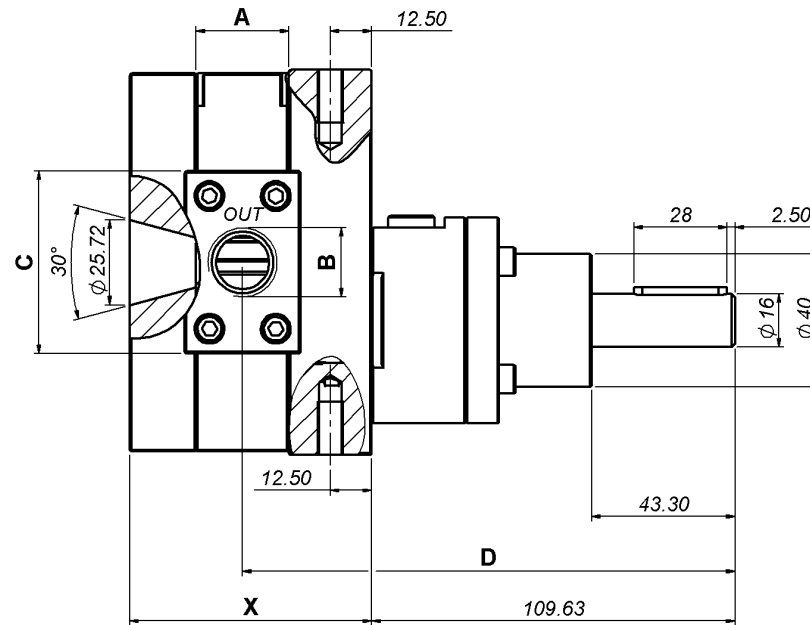
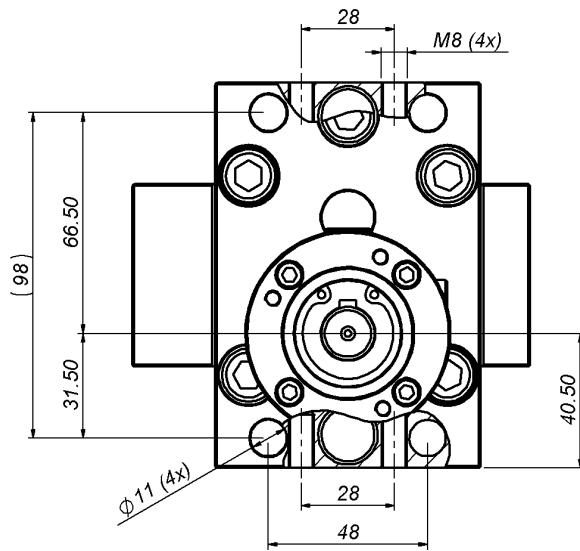
Available options / accessories

- Pump available in ATEX certified version
- Product fittings on request
- Calibration certificate

Definition / Pump options

	3610	-2-1	/	A	/	16.0	/	S	/	T2	/	EA	/	16	/	12	/	G	
I/O location																			
Inlet at the back and outlet on the side of the pump		-2-1																	
Rotation direction																			
Clockwise rotation				A															
Cylinder capacity																			
6.0 cc/rev						6.0													
10.0 cc/rev						10.0													
16.0 cc/rev						16.0													
22.0 cc/rev						22.0													
Operation clearance																			
Reduced clearance, for low viscosity products																			F
Standard clearance, for the vast majority of products																			S
Increased clearance, for high viscosity or highly filled products																			J
Surface treatment																			
Without treatment																			
ADLC (Amorphous Diamond Like Carbon)										T2									
Sealing system																			
Lip seals + liquid barrier																			EA
Lip seal + teflon packing																			EB
Drive shaft diameter																			
Shaft \varnothing 16mm with 5mm key																			16
Product connection																			
Output G1/2 on the side of the middle plate																			12
Modification for difficult products*.																			
Without modification																			
With modification (can be G or Gx depending on the type of modification)																			Gx

*To be defined with Pomtava
Bold line = standard Pomtava



Flow rate (cc/rev)	6.0	10.0	16.0	22.0
X (mm)	55.5	62.5	73.0	83.5
Y (mm)	11.75	11.75	15	15
Z (mm)	20.25	34.75	25	35
A (mm)	20	30	35	35
B	G 1/4"	G 1/2"	G 1/2"	G 3/4"
C (mm)	50	50	55	55
D (mm)	139.65	143.20	148.40	153.70