

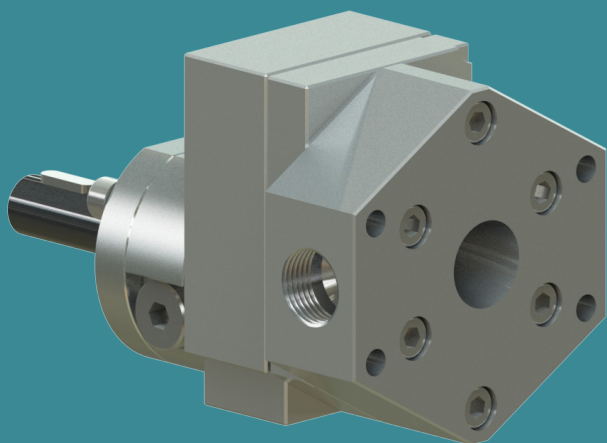


POMTAVA

METERING GEAR PUMPS

DATA SHEET

1610-2-1



Available flow rates (cc/rev)

0.1 / 0.3 / 0.6 / 1.2

1.8 / 2.4 / 3.0

Application fields

Silicones, glues, elastomers, polyurethanes, various resins, various hardeners, pigments, polyesters, epoxy, etc.

Strong points

- All parts are in tempered stainless steel
- Maximum reduction of «dead zones» allowing for better flushing
- Sealing option quickly interchangeable
- Strong, coated drive shaft, held in place with 2 bearings and a axial thrust
- Centering pins making pump assembly easier and increasing its accuracy

Technical data

- Pump to be flanged to a follower plate
- Sealingsystem: Lip seals and liquid barrier (16KA)
- Rotation speed: From 10min⁻¹ to 200min⁻¹, depending on the product involved
- Flow rate range: From 0.0005 l/min to 0.6 l/min (depending on pump size)
- Standard direction of rotation: Clockwise rotation (A)
- Allowed outlet pressure: Max. 100 bar
- Input and output: Inlet \varnothing 18mm tapered at the back, outlet G1/4" on the side of the cover
- Drive shaft diameter: \varnothing 12mm with 4mm key

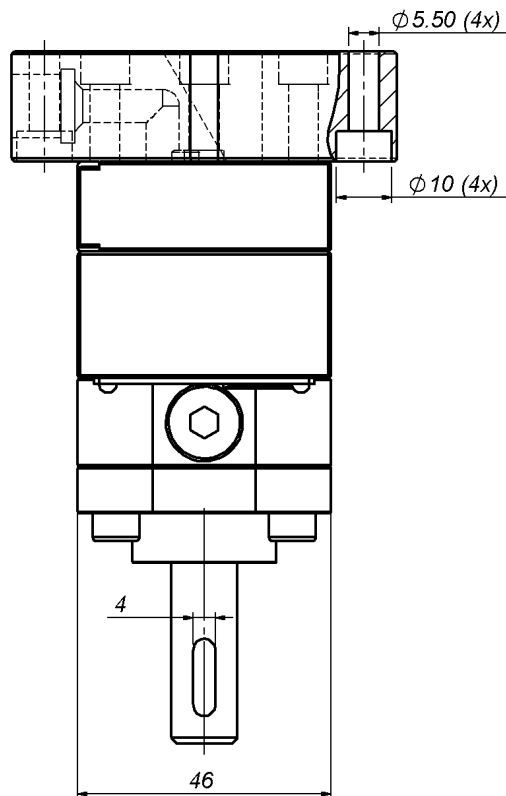
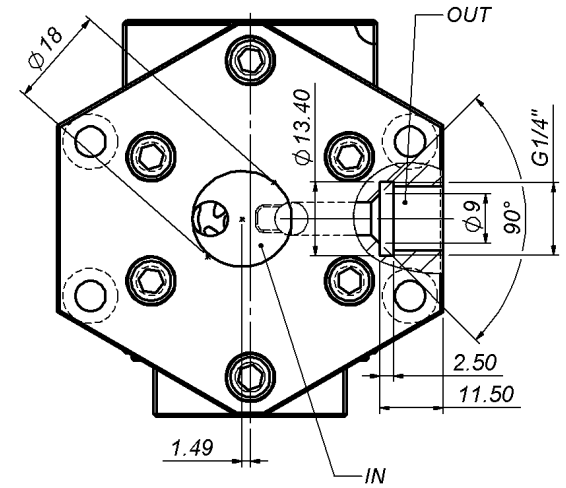
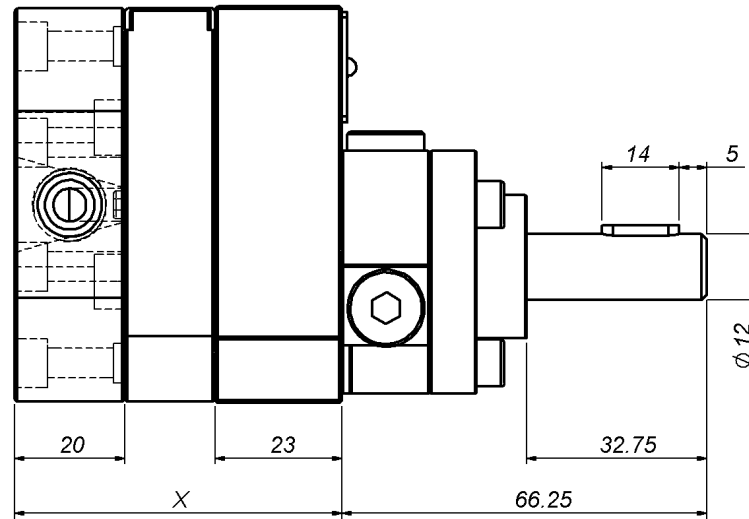
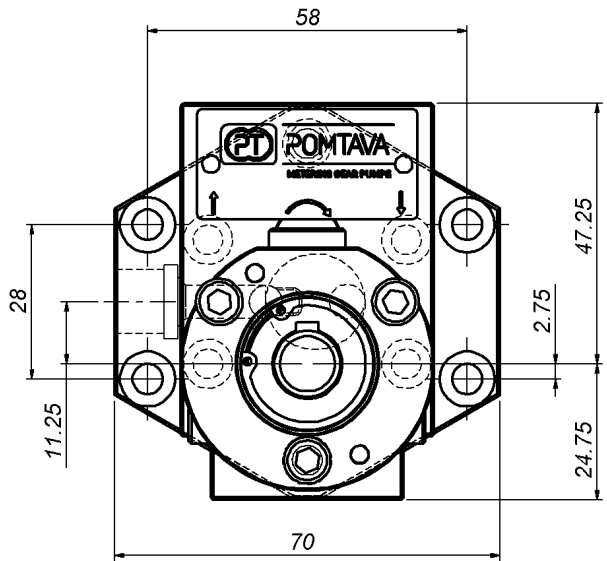
Available options / accessories

- Pump available in ATEX certified version
- Product fittings on request
- Calibration certificate

Definition / Pump options

	1610	-2-1	A	0.3	S	T2	KA	12	14	HZ	G
I/O location In at the back and out on the side of the pump	-2-1										
Rotation direction											
Clockwise rotation			A								
Clockwise rotation + Anticlockwise rotation			AZ								
Cylinder capacity											
0.1 cc/rev				0.1							
0.3 cc/rev				0.3							
0.6 cc/rev				0.6							
1.2 cc/rev				1.2							
1.8 cc/rev				1.8							
2.4 cc/rev				2.4							
3.0 cc/rev				3.0							
Operation clearance											
Reduced clearance, for low viscosity products											F
Standard clearance, for the vast majority of products											S
Increased clearance, for high viscosity or highly filled products											J
Special clearance, specific to a special product											H
Surface treatment											
Without treatment											
ADLC (Amorphous Diamond Like Carbon)											T2
Sealing system											
Lip seals + liquid barrier											KA
Lip seal + teflon packing											EB
Drive shaft diameter											
Shaft ø12mm with 4mm key											12
Shaft ø10mm with 3mm key											10
Product connection											
Outlet G1/4" on the side of the cover											14
Outlet G3/8" on the side of the cover											38
Heating option											
Without heating option											
Pump prepared for 2 heating elements ø10mm, length 40mm + 2 housings for PT100 sensor											HZ
Modification for difficult products*.											
Without modification											
With modification (can be G or Gx depending on the type of modification)											Gx

*To be defined with Pomtava
Bold line = standard Pomtava



Flow rate (cc/rev)	0.1	0.3	0.6	1.2	1.8	2.4	3.0
X (mm)	46.16	45.85	48.50	54.13	52.90	55.96	59.40