



# POMTAVA

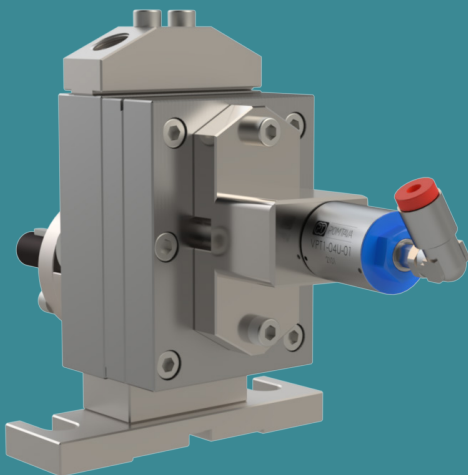
METERING GEAR PUMPS

## DATA SHEET

### 2611-4-1



### 2611-4-2



Available flow rates (cc/rev)

1.2 / 2.4 / 3.0

6.0 / 10.0

## Application fields

This pump is mainly used for water-based and solvent-based paints in the industrial and automotive sectors.

## Strong points

- All parts are in tempered stainless steel
- Maximum reduction of «dead zones» allowing for better flushing
- Sealing option quickly interchangeable
- Strong, coated drive shaft, held in place with 2 bearings and a axial thrust
- Centering pins making pump assembly easier and increasing its accuracy
- Pump cover 2610-4-2 with flushing holes for optional bypass block

## Technical data

- Sealingsystem: Lip seals and liquid barrier (26KA)
- Rotation speed: From 10min<sup>-1</sup> to 200min<sup>-1</sup>, depending on the product involved
- Flow rate range: From 0.012 l/min to 2 l/min (depending on pump size)
- Standard direction of rotation: Clockwise rotation (A)
- Allowed outlet pressure: Max. 100 bar
- Input and output: 2x Ø 6mm on the pump cover. Delivered with connecting block G1/4"
- Drive shaft diameter: Ø 12mm with 4mm key
- Drive shaft height: H=51mm
- Fixing distance: L=80mm

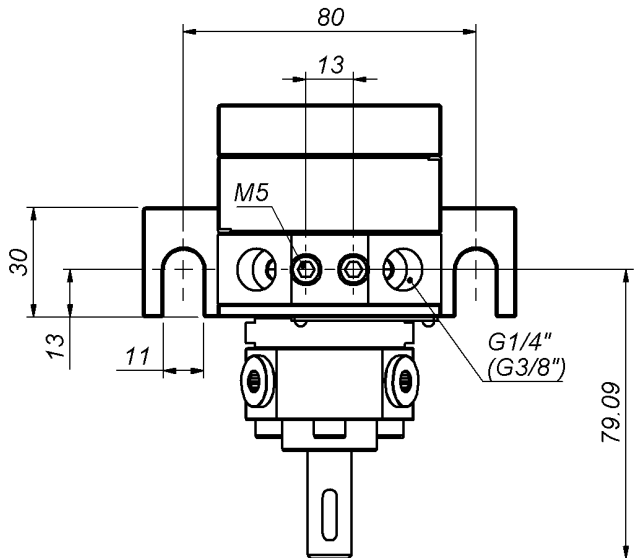
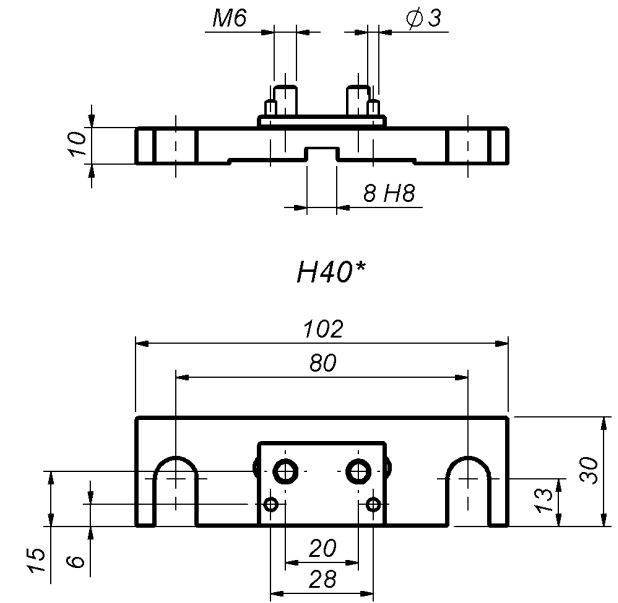
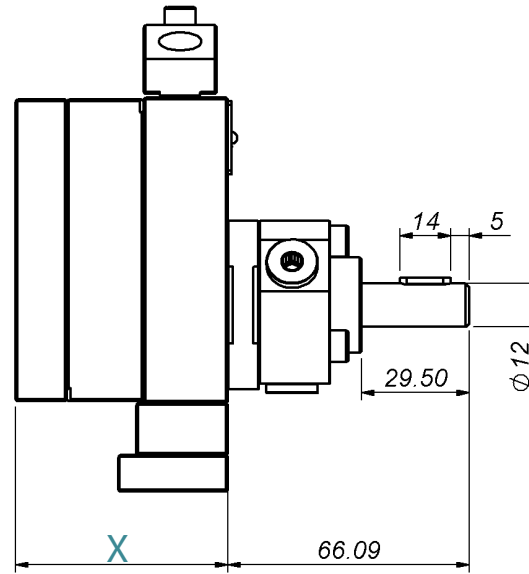
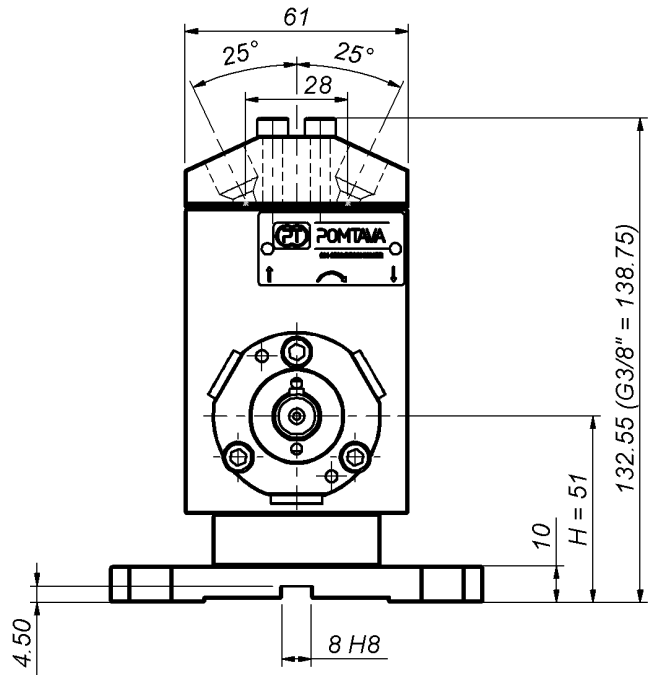
## Available options / accessories

- Support H=40mm / L=55mm
- Pump available in ATEX certified version
- Product fittings on request
- Calibration certificate
- Pressure sensors
- Pressure regulators
- Integrated flow meter

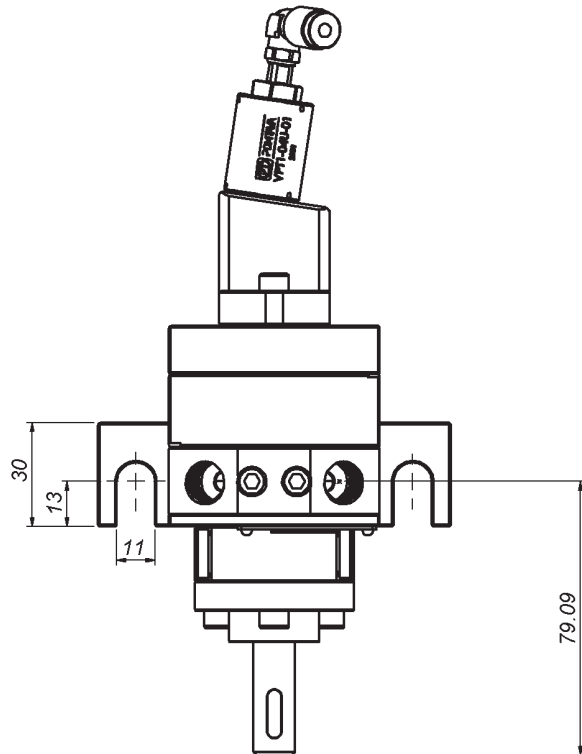
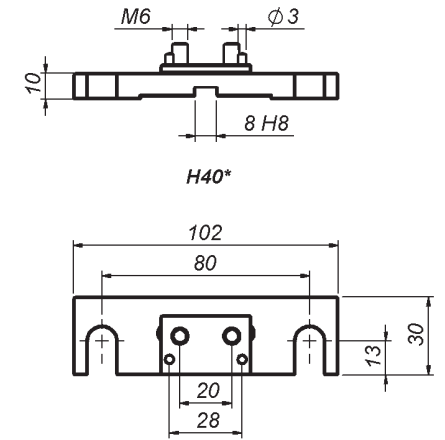
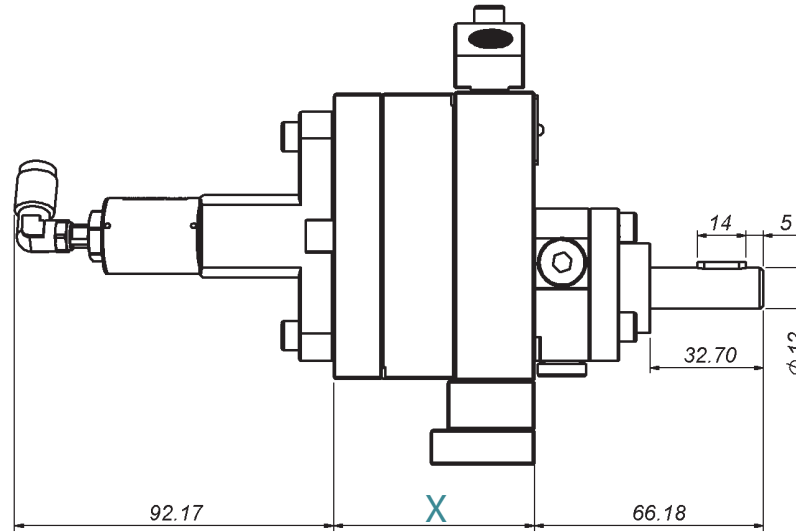
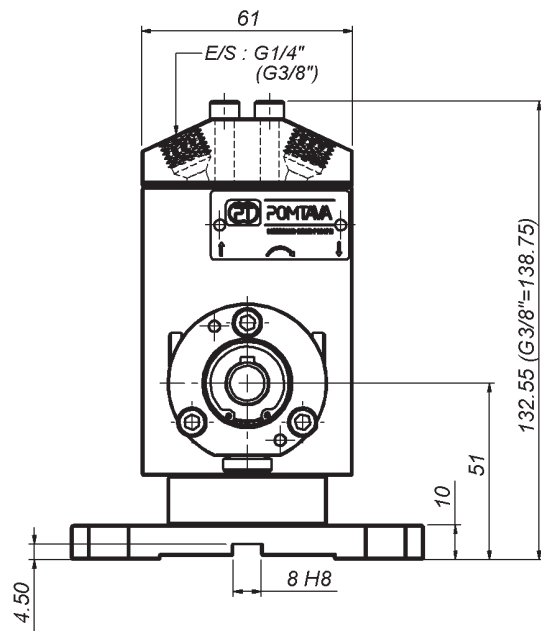
# Definition / Pump options

	2611	-4	-1	/	A	/	1.2	/	S	/	R	/	T2	/	KA	/	12	/	14	/	G	
<b>I/O location</b>																						
I/O on the pump body		-4																				
<b>Pump flushability</b>																						
<b>Without flushing</b>			-1																			
With flushing			-2																			
<b>Rotation direction</b>																						
<b>Clockwise rotation</b>					A																	
Anticlockwise rotation					Z																	
Clockwise rotation + Anticlockwise rotation					AZ																	
<b>Cylinder capacity</b>																						
1.2 cc/tr							1.2															
2.4 cc/tr							2.4															
3.0 cc/tr							3.0															
6.0 cc/tr							6.0															
10.0 cc/tr							10.0															
<b>Operation clearance</b>																						
Reduced clearance, for low viscosity products										F												
<b>Standard clearance, for the vast majority of products</b>										S												
Increased clearance, for high viscosity or highly filled products										J												
Special clearance, specific to a special product										H												
<b>Bypass option</b>																						
<b>Without bypass</b>																						
With bypass											R											
<b>Surface treatment</b>																						
<b>Without treatment</b>																						
ADLC (Amorphous Diamond Like Carbon)													T2									
<b>Sealing system</b>																						
<b>Lip seals + liquid barrier</b>															KA							
Lip seal + teflon packing															EB							
<b>Drive shaft diameter</b>																						
<b>Shaft ø12mm with 4mm key</b>																	12					
Shaft ø10mm with 3mm key																	10					
<b>Product connection</b>																						
<b>Connection block for 2 fittings G1/4"</b>																					14	
Connection block for 2 fittings G1/8"																						18
Connection block including housing for pressure transmitters																						W
<b>Modification for difficult products*.</b>																						
<b>Without modification</b>																						
With modification (can be G or Gx depending on the type of modification)																						Gx

\*To be defined with Pomtava  
**Bold line = standard Pomtava**



Flow rate (cc/rev)	1.2	2.4	3.0	6.0	10.0
X (mm)	41.2	45.4	47.5	58.0	72.0



Flow rate (cc/rev)	1.2	2.4	3.0	6.0	10.0
X (mm)	41.2	45.4	47.5	58.0	72.0