

Metering gear pumps

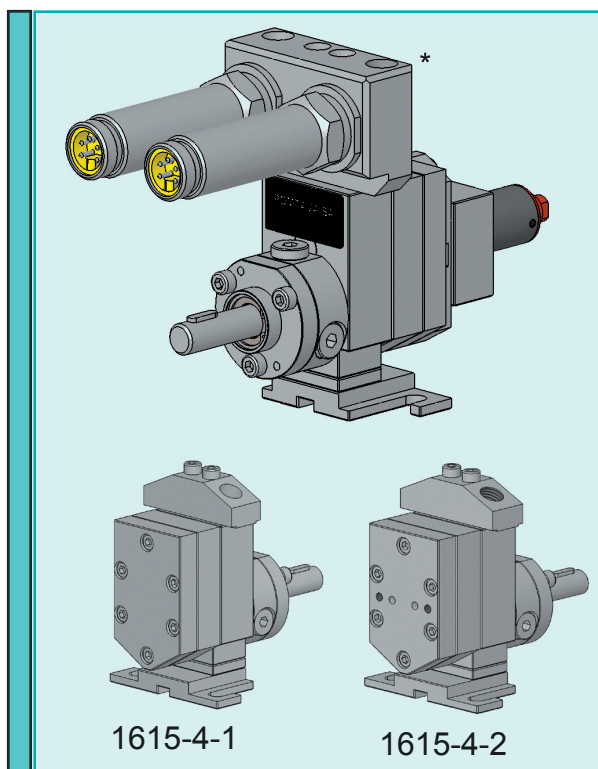
1615-4-1 / 1615-4-2

Overview

- All parts but the gears are in tempered stainless steel
- Gears are in PEEK
- New sealing technology combining lip seals and liquid barrier
- Sealing options quickly interchangeable
- Strong, coated drive shaft, held in place with 2 bearings and a axial thrust
- Centering pins making pump assembly easier and increasing its accuracy
- Possibility to mount a bypass block (only in option with pump 1615-4-2)

Application fields

Water, flavours, non-filled products with very low viscosity



* connecting block for pressure sensors is an option

Technical data

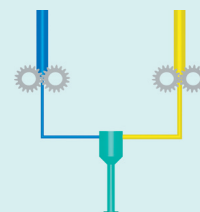
Sealing :	Lip seals and liquid barrier (KA)
Gears material :	PEEK
Surface treatment :	All steel parts are treated with ADLC
Rotation speed :	From 10min ⁻¹ to 100min ⁻¹
Standard rotation :	Clockwise rotation (A)
Temperature :	Max. 135°C
Output pressure :	Max. 15 bars
Input/Output :	2 holes Ø 6mm on the body of the pump. Delivered with a standard connecting block G1/4"
Driving shaft diameter :	Ø12mm with a 4mm key
Drive shaft height :	H=40mm

Available outputs

0.6 cc/rev 1.2cc/rev 1.8cc/rev 2.4cc/rev 3.0cc/rev

Options

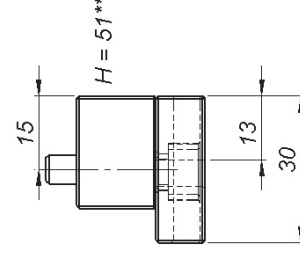
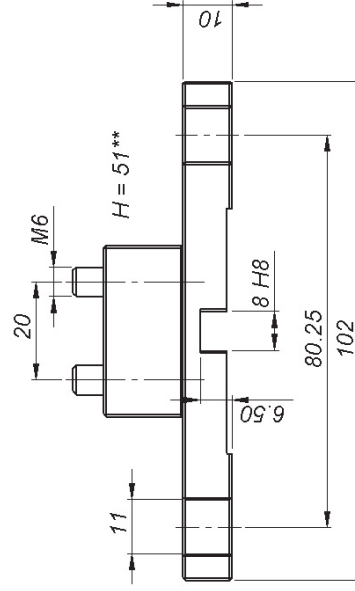
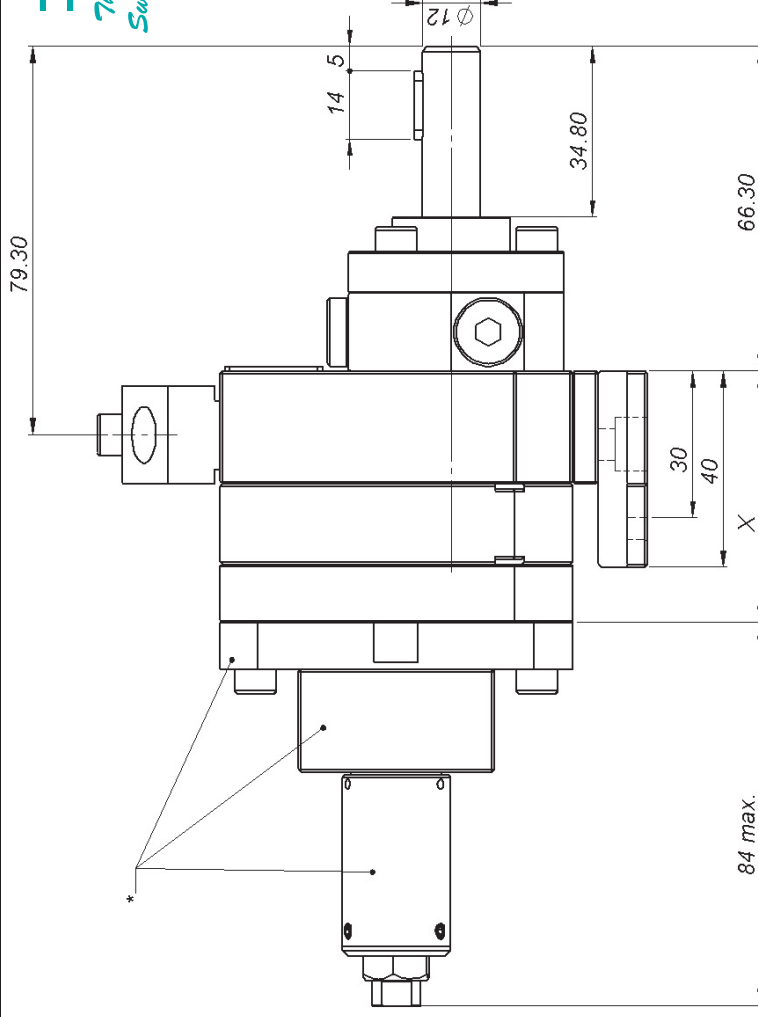
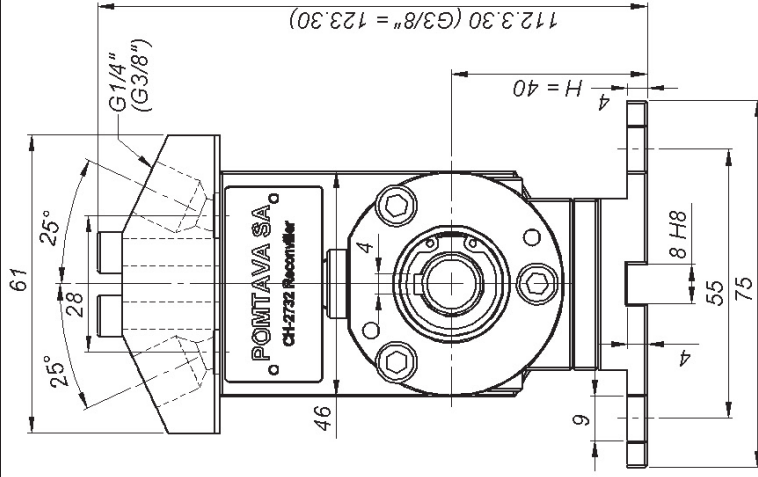
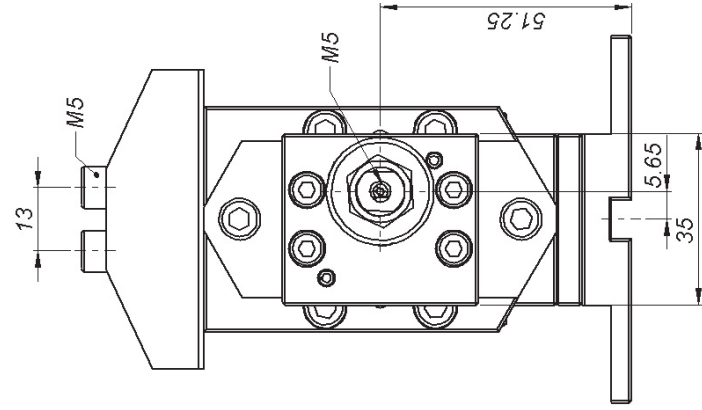
- **(H51)** Stand H=51mm compatible with Group 1 and 2
- **(Z)** Counterclockwise rotation
- **(AZ)** Clockwise and counterclockwise rotation
- **(AB38)** Connecting block G3/8"
- **(W)** Connecting block G1/4" for pressure sensors M28x1.5 or G1/2"
- **(EB)** Teflon packing sealing
- **(EX)** Can be ATEX certified
- **(BB)** Bypass block (available only with pump 1615-4-2)



Metering gear pump type

1615-4-1

Multicomponents
Group 1



Outputs (cc/rev)	0.05	0.1	0.3	0.6	1.2	1.8	2.4	3.0
X (mm)	36.5	37.8	36	38.5	44	43	46	49.5

** Option H51

POMTAVA S.A., Nonceruz 2 CH-2732 Reconville

Tel. ++41 (0)32 481 15 14 / Fax. ++41 (0)32 481 48 18 / www.pomtava.com / info@pomtava.com

