

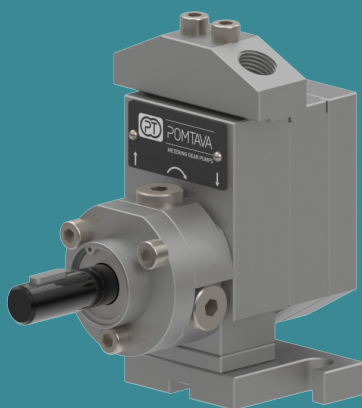


# POMTAVA

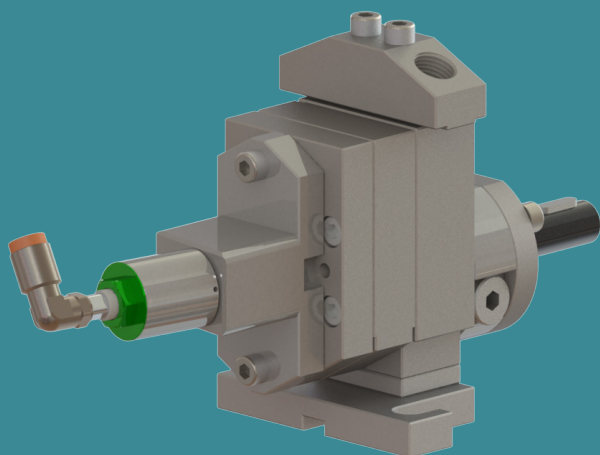
METERING GEAR PUMPS

## DATA SHEET

### 1610-4-1



### 1610-4-2



## Available flow rates (cc/rev)

0.05 / 0.1 / 0.3 / 0.6 /  
1.2 / 1.8 / 2.4 / 3.0

## Application fields

Silicones, glues, elastomers, polyurethanes, various resins, various hardeners, pigments, polyesters, epoxy, etc.

## Strong points

- All parts are in tempered stainless steel
- Maximum reduction of «dead zones» allowing for better flushing
- Sealing option quickly interchangeable
- Strong, coated drive shaft, held in place with 2 bearings and a axial thrust
- Centering pins making pump assembly easier and increasing its accuracy
- Pump cover 1610-4-2 with flushing holes for optional bypass block

## Technical data

- Sealingsystem: Lip seals and liquid barrier (16KA)
- Rotation speed: From 10min<sup>-1</sup> to 200min<sup>-1</sup>, depending on the product involved
- Flow rate range: From 0.0005 l/min to 0.6 l/min (depending on pump size)
- Standard direction of rotation: Clockwise rotation (A)
- Allowed outlet pressure: Max. 100 bar
- Input and output: 2x Ø 6mm on the pump body. Delivered with connecting block G1/4" (0.05 cc/rev + 0.1 cc/rev: G1/8")
- Drive shaft diameter: Ø 12mm with 4mm key
- Drive shaft height: H=40mm
- Fixing distance: L=55mm

## Available options / accessories

- Support H=51mm / L=80mm
- Pump available in ATEX certified version
- Bypass block (1610-4-2)
- Product fittings on request
- Calibration certificate
- Pressure sensors
- Pressure regulators
- Integrated flow meter

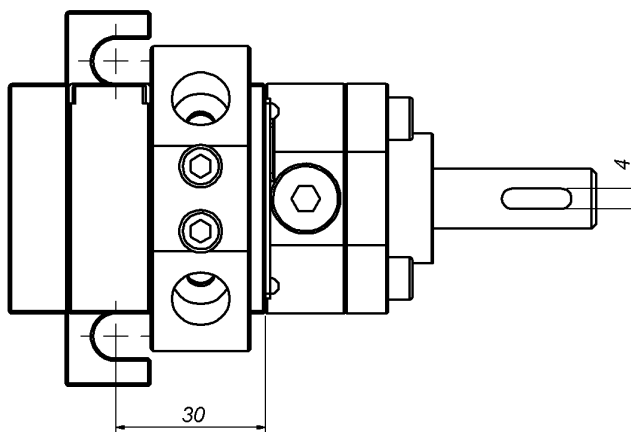
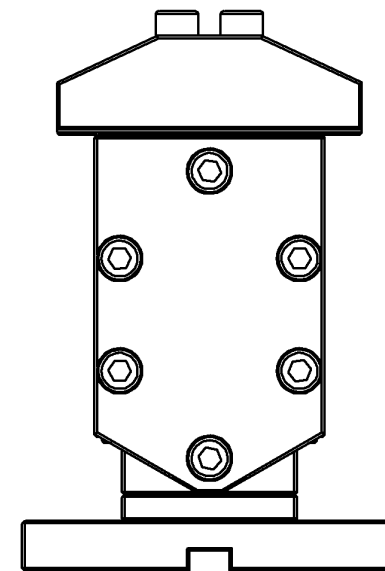
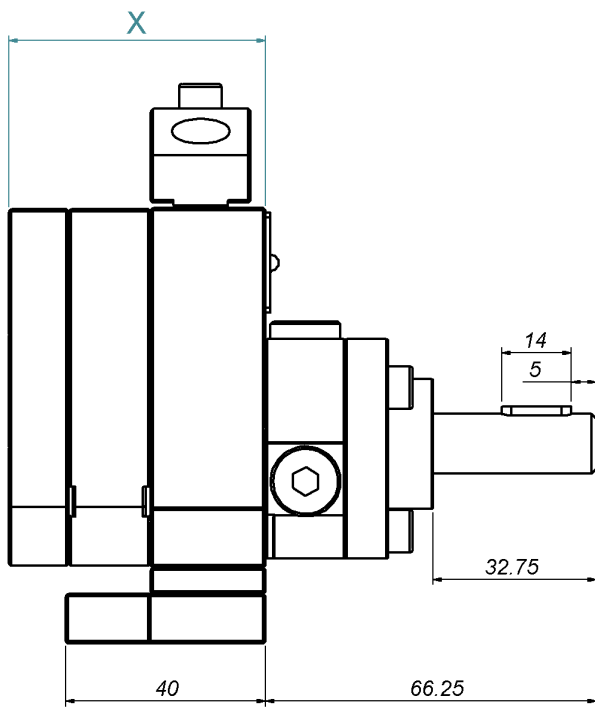
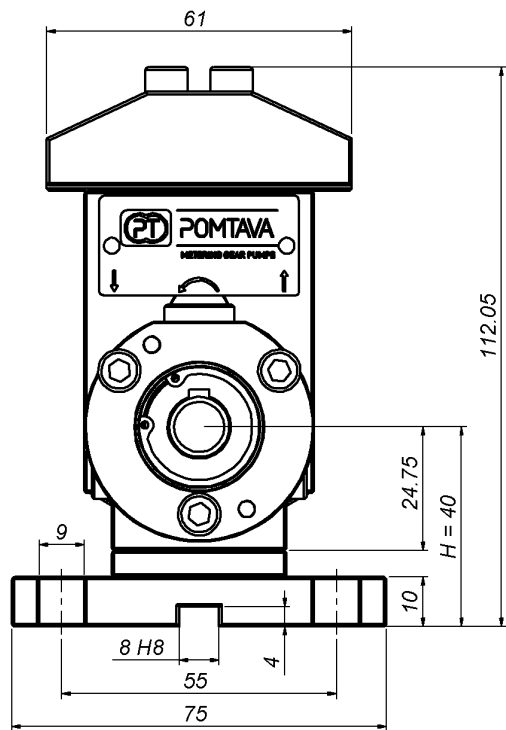
# Definition / Pump options

	1610	-4	-1	-2	/ A	/ 0.3	/ S	/ R	/ T2	/ KA	/ 12	/ 14	/ HZ	/ G
<b>I/O location</b>														
I/O on the pump body		-4												
<b>Pump flushability</b>														
<b>Without flushing</b>			-1											
With flushing			-2											
<b>Alternative*</b>														
Reinforced model for pressure →100 bar														
<b>Rotation direction</b>														
<b>Clockwise rotation</b>					A									
Anticlockwise rotation					Z									
Clockwise rotation + Anticlockwise rotation					AZ									
<b>Cylinder capacity</b>														
0.05 cc/rev						0.05								
0.1 cc/rev						0.1								
0.3 cc/rev						0.3								
0.6 cc/rev						0.6								
1.2 cc/rev						1.2								
1.8 cc/rev						1.8								
2.4 cc/rev						2.4								
3.0 cc/rev						3.0								
<b>Operation clearance</b>														
Reduced clearance, for low viscosity products							F							
<b>Standard clearance, for the vast majority of products</b>							S							
Increased clearance, for high viscosity or highly filled products							J							
Special clearance, specific to a special product							H							
<b>Bypass option</b>														
<b>Without bypass</b>														
With bypass								R						
<b>Surface treatment</b>														
<b>Without treatment</b>														
ADLC (Amorphous Diamond Like Carbon)									T2					
<b>Sealing system</b>														
<b>Lip seals + liquid barrier</b>										KA				
Lip seal + teflon packing										EB				
<b>Drive shaft diameter</b>														
<b>Shaft ø12mm with 4mm key</b>											12			
Shaft ø10mm with 3mm key											10			
<b>Product connection</b>														
<b>Connection block for 2 fittings G1/4"</b>												14		
Connection block for 2 fittings G1/8"													18	
Connection block including housing for pressure transmitters														W
<b>Heating option **</b>														
<b>Without heating option</b>														
Pump prepared for 2 heating elements ø10mm, length 40mm + 2 housings for PT100 sensor													HZ	
<b>Modification for difficult products*.</b>														
<b>Without modification</b>														
With modification (can be G or Gx depending on the type of modification)														Gx

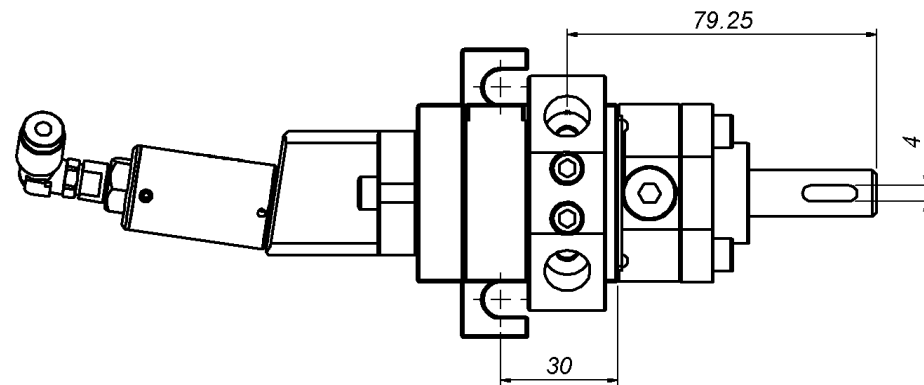
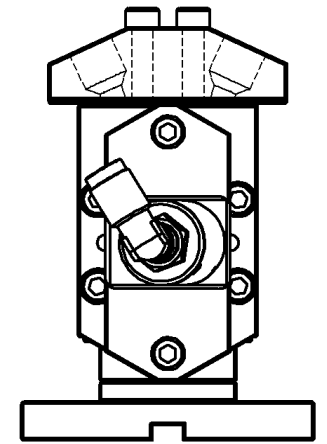
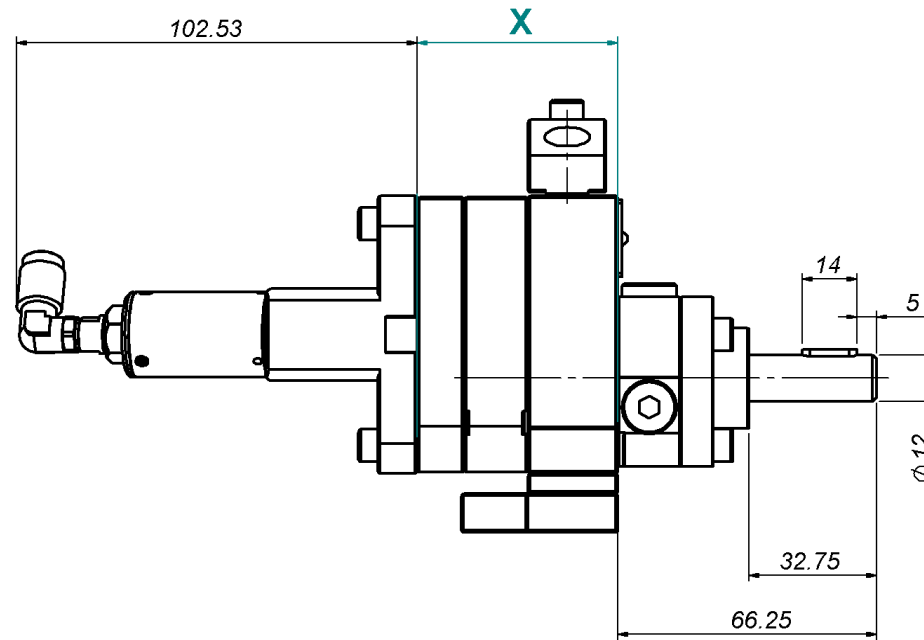
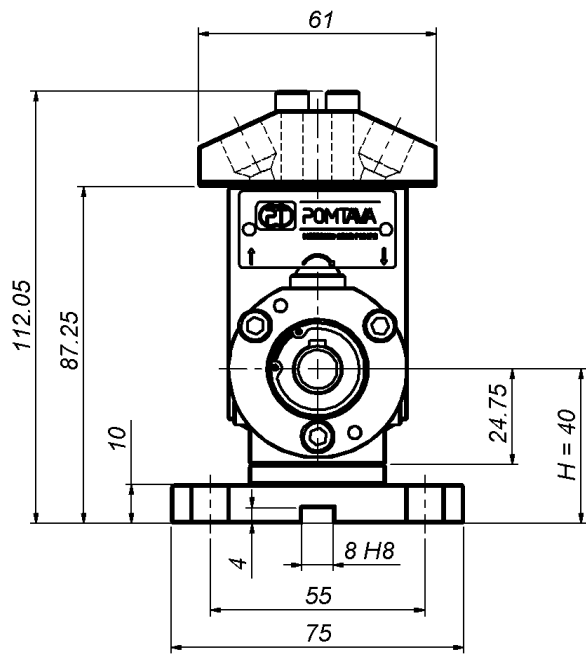
\*To be defined with Pomtava

\*\* Only 1610-4-1

Bold line = standard Pomtava



Flow rate (cc/rev)	0.05	0.1	0.3	0.6	1.2	1.8	2.4	3.0
X (mm)	36.58	38.16	37.8	40.5	46.1	44.90	47.9	51.4



Flow rate (cc/rev)	0.05	0.1	0.3	0.6	1.2	1.8	2.4	3.0
X (mm)	36.58	38.16	37.8	40.5	46.1	44.90	47.9	51.4