

# Metering gear pumps

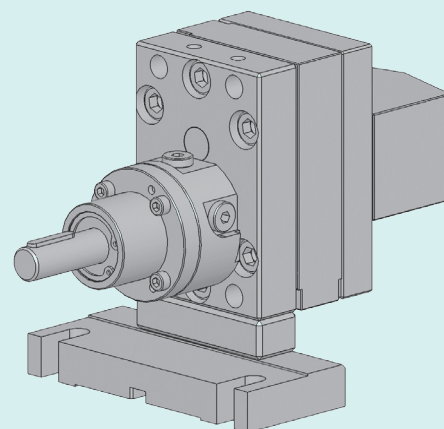
**3615-1-1**

## Application fields

This pump is suited to meter non-filled products with very low viscosity such as some kind of alcohol, water, acetone, amin, etc.

## Overview

- All parts are in tempered stainless steel
- Gears are in PEEK
- New sealing technology combining 3 lip seals and a optional liquid barrier
- Strong, coated drive shaft, held in place with 2 bearings and a axial thrust
- Centering pins making pump assembly easier and increasing its accuracy
- All parts are treated with ADLC, increasing life span of the pump



## Technical data

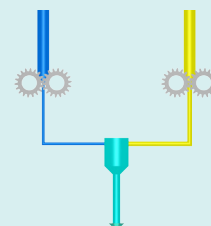
|                                 |   |
|---------------------------------|---|
| <b>Sealing :</b>                | Lip seals and liquid barrier (36EA)   |
| <b>Rotation speed :</b>         | up to 120min <sup>-1</sup>  |
| <b>Standard rotation :</b>      | Clockwise rotation (A)  |
| <b>Temperature :</b>            | Max. 135°C  |
| <b>Allowed viscosity :</b>      | from 0.1 to 10 mPas   |
| <b>Output pressure :</b>        | Max. 15 bars  |
| <b>Input/Output :</b>           | 2 holes Ø 15mm on the rear of the pump. Delivered with connecting block G3/8" |
| <b>Driving shaft diameter :</b> | Ø16mm with a 5mm key  |
| <b>Surface coating :</b>        | ADLC  |
| <b>Drive shaft height :</b>     | H=79mm  |

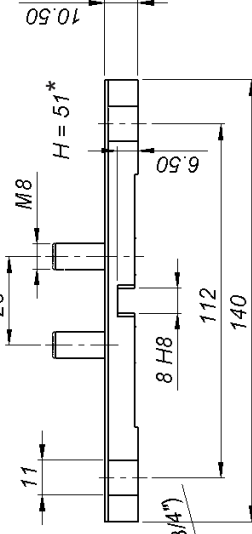
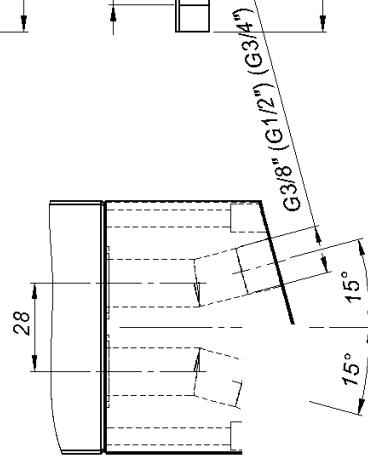
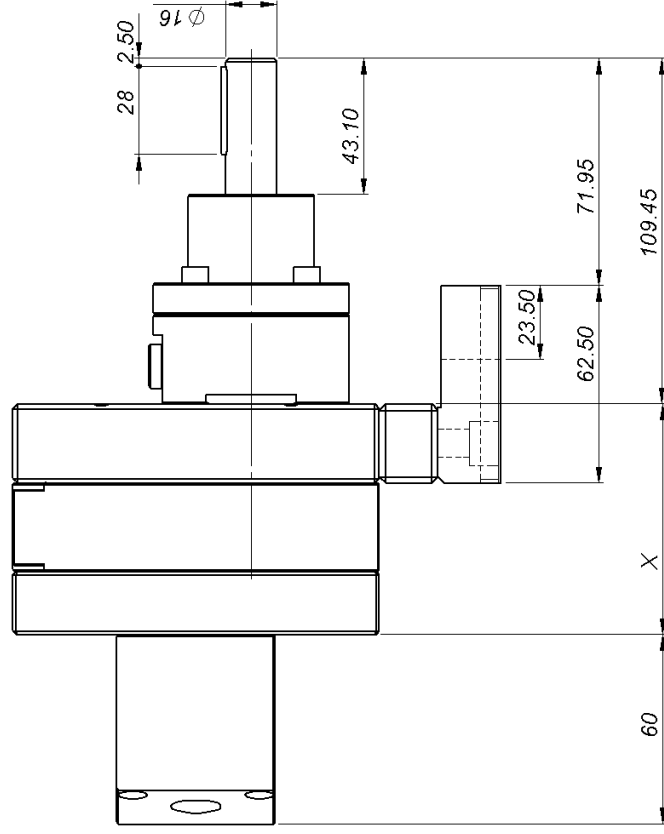
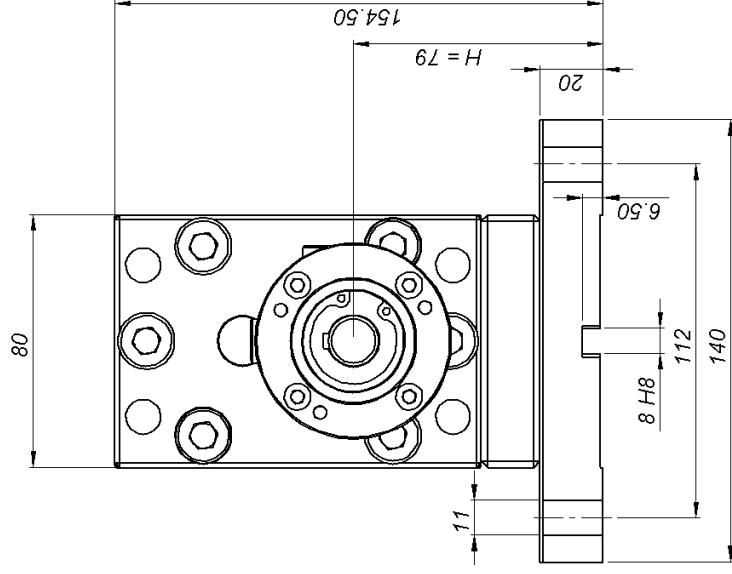
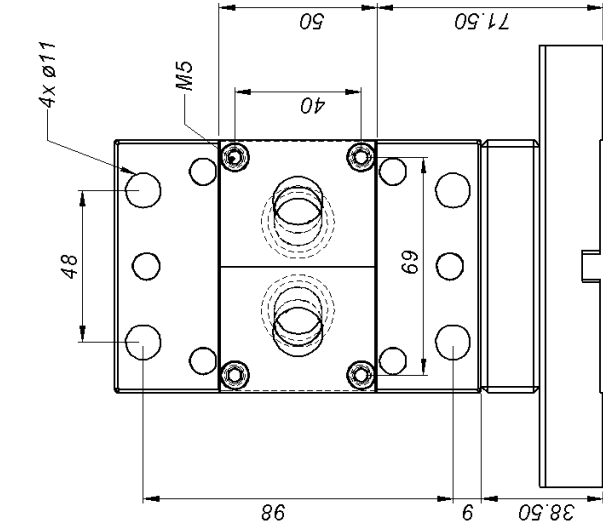
## Available outputs

6.0cc/rev    10.0cc/rev    16.0cc/rev    22.0cc/rev

## Options

- **(H51)** Stand for drive shaft height H=51mm
- **(H135)** Stand for drive shaft height H=135mm
- **(Z)** Counterclockwise rotation
- **(AZ)** Clockwise and counterclockwise rotation
- **(AB12)** Connecting block G1/2"
- **(AB34)** Connecting block G3/4"
- Fittings and valves : please consult our accessories catalog





\* Option H51

|                  |      |      |      |      |
|------------------|------|------|------|------|
| Outputs (cc/rev) | 6.0  | 10.0 | 16.0 | 22.0 |
| X (mm)           | 55.5 | 62.5 | 73.0 | 83.5 |

POMTAVA S.A., Nonceruz 2 CH-2732 Reconville  
Tel. ++41 (0)32 481 15 14 / Fax. ++41 (0)32 481 48 18 / www.pomtava.com / info@pomtava.com