

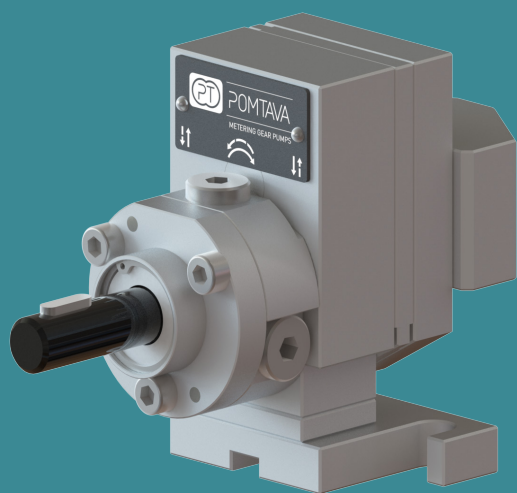


POMTAVA

METERING GEAR PUMPS

DATA SHEET

1610-1-1



Available flow rates (cc/rev)

0.05 / 0.1 / 0.3 / 0.6 /
1.2 / 1.8 / 2.4 / 3.0

Application fields

Silicones, glues, elastomers, polyurethanes, various resins, various hardeners, pigments, polyesters, epoxy, etc.

Strong points

- All parts are in tempered stainless steel
- Maximum reduction of «dead zones» allowing for better flushing
- Sealing option quickly interchangeable
- Strong, coated drive shaft, held in place with 2 bearings and a axial thrust
- Centering pins making pump assembly easier and increasing its accuracy

Technical data

- Sealingsystem: Lip seals and liquid barrier (16KA)
- Rotation speed: From 10min⁻¹ to 200min⁻¹, depending on the product involved
- Flow rate range: From 0.0005 l/min to 0.6 l/min (depending on pump size)
- Standard direction of rotation: Clockwise rotation (A)
- Allowed outlet pressure: Max. 100 bar, type 1610-1-1-2, for higher pressure, needs to be defined with POMTAVA technical department.
- Input and output: 2x Ø 6mm on the pump cover. Delivered with connecting block G1/4" (0.05 cc/rev + 0.1 cc/rev: G1/8")
- Drive shaft diameter: Ø 12mm with 4mm key
- Drive shaft height: H=40mm
- Fixing distance: L=55mm

Available options / accessories

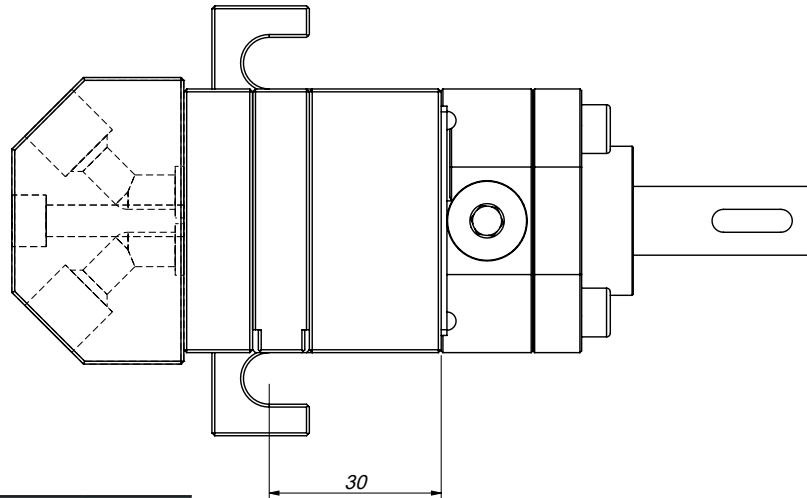
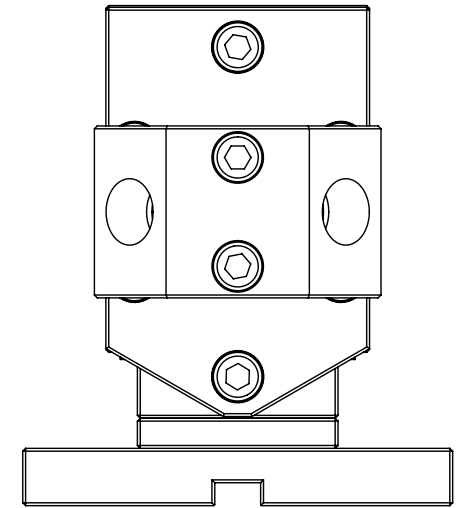
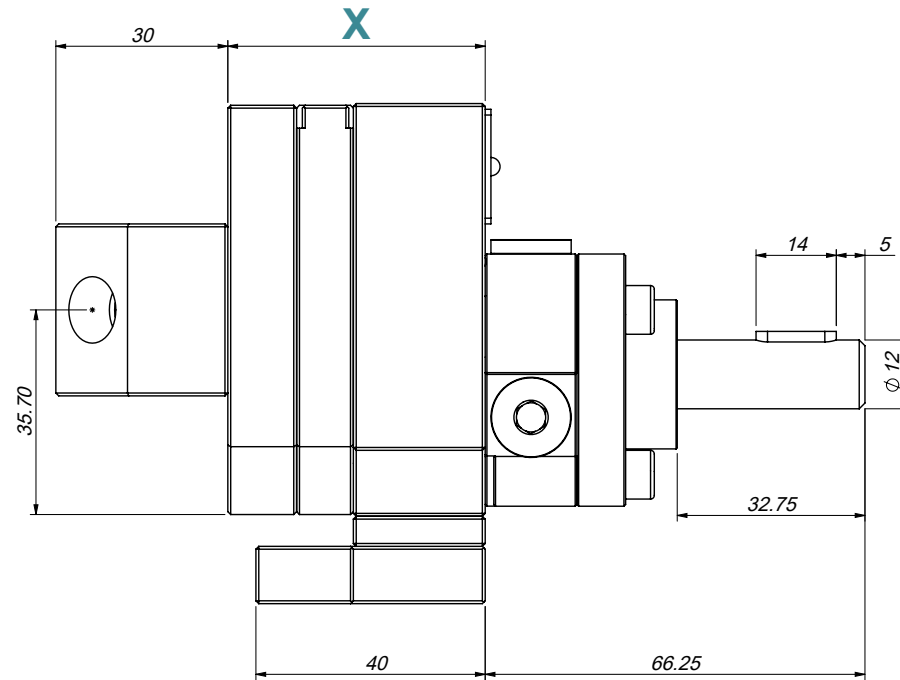
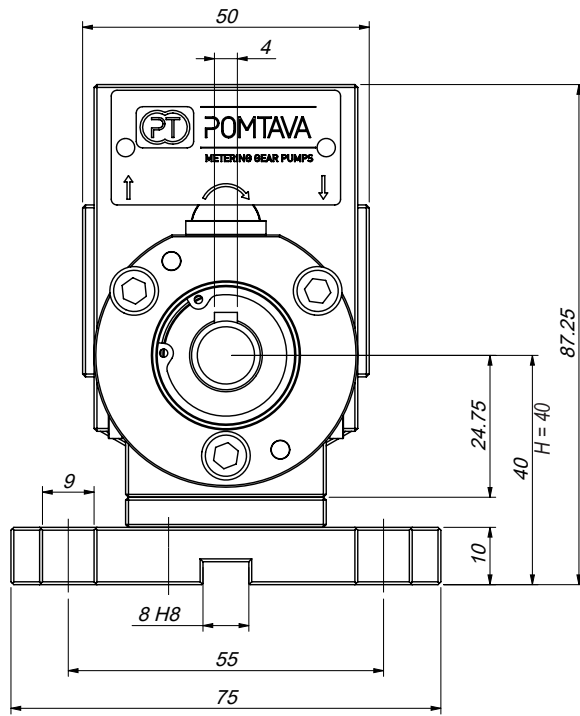
- Support H=51mm / L=80mm
- Pump available in ATEX certified version
- Product fittings on request
- Calibration certificate
- Pressure sensors
- Pressure regulators
- Integrated flow meter

Definition / Pump options

	1610	-1-1	-2	/	A	/	0.3	/	S	/	T2	/	KA	/	12	/	14	/	HZ	/	G	
I/O location																						
I/O at the back of the pump		-1-1																				
Alternative*																						
Reinforced model for pressure > 100 bar																						
Rotation direction																						
Clockwise rotation																						
Clockwise rotation																						
Anticlockwise rotation																						
Clockwise rotation + Anticlockwise rotation																						
Cylinder capacity																						
0.05 cc/rev																						
0.1 cc/rev																						
0.3 cc/rev																						
0.6 cc/rev																						
1.2 cc/rev																						
1.8 cc/rev																						
2.4 cc/rev																						
3.0 cc/rev																						
Operation clearance																						
Reduced clearance, for low viscosity products																						
Standard clearance, for the vast majority of products																						
Standard clearance, for the vast majority of products																						
Increased clearance, for high viscosity or highly filled products																						
Special clearance, specific to a special product																						
Surface treatment																						
Without treatment																						
ADLC (Amorphous Diamond Like Carbon)																						
Sealing system																						
Lip seals + liquid barrier																						
Lip seals + liquid barrier																						
Lip seal + teflon packing																						
Drive shaft diameter																						
Shaft ø12mm with 4mm key																						
Shaft ø12mm with 4mm key																						
Shaft ø10mm with 3mm key																						
Product connection																						
Connection block for 2 fittings G1/4"																						
Connection block for 2 fittings G1/4"																						
Connection block for 2 fittings G1/8"																						
Connection block for 2 fittings G1/8"																						
Connection block including housing for pressure transmitters																						
Heating option																						
Without heating option																						
Pump prepared for 2 heating elements ø10mm, length 40mm + 2 housings for PT100 sensor																						
Modification for difficult products*																						
Without modification																						
With modification (can be G or Gx depending on the type of modification)																						

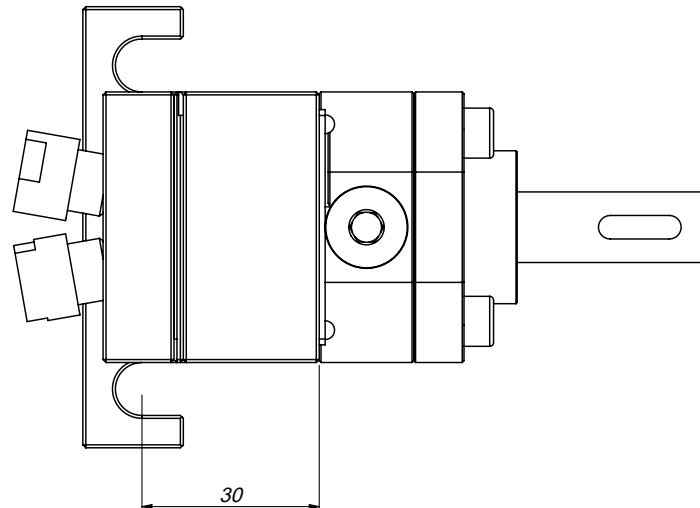
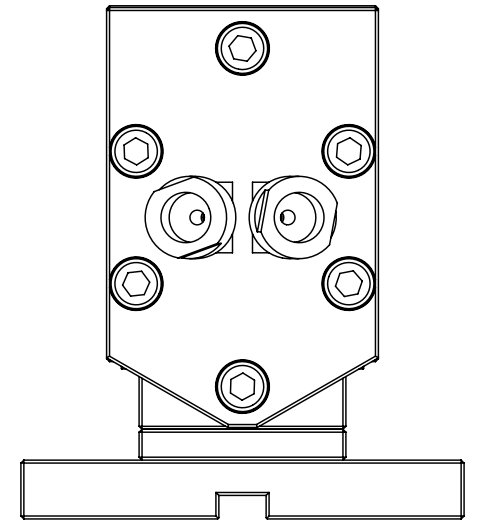
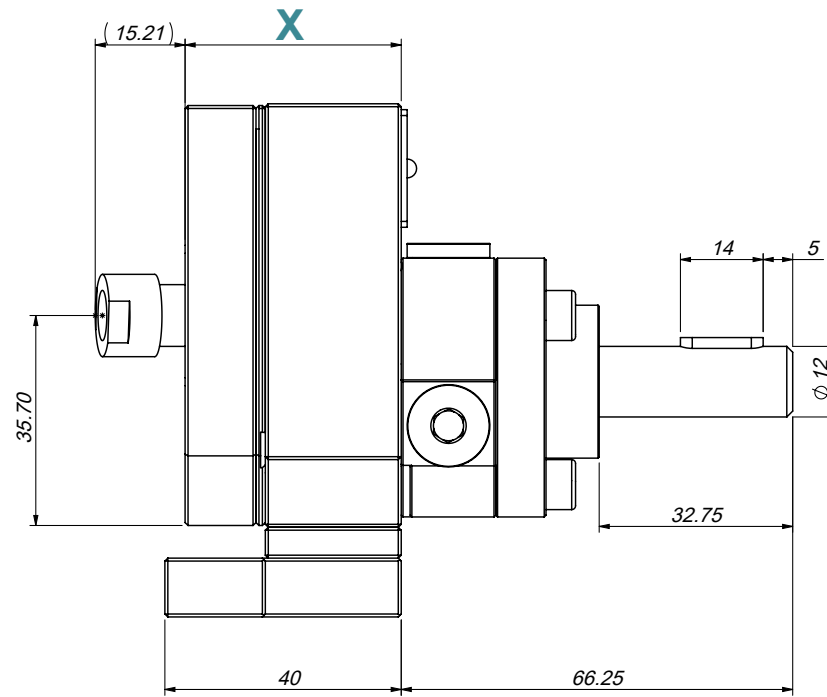
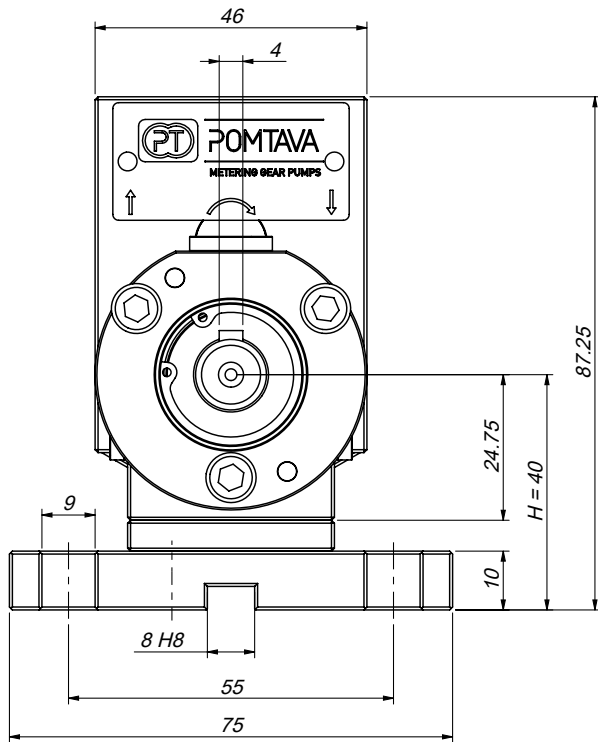
*To be defined with Pomtava
Bold line = standard Pomtava

1610-1-1 (0.3 to 3.0cc/rev)



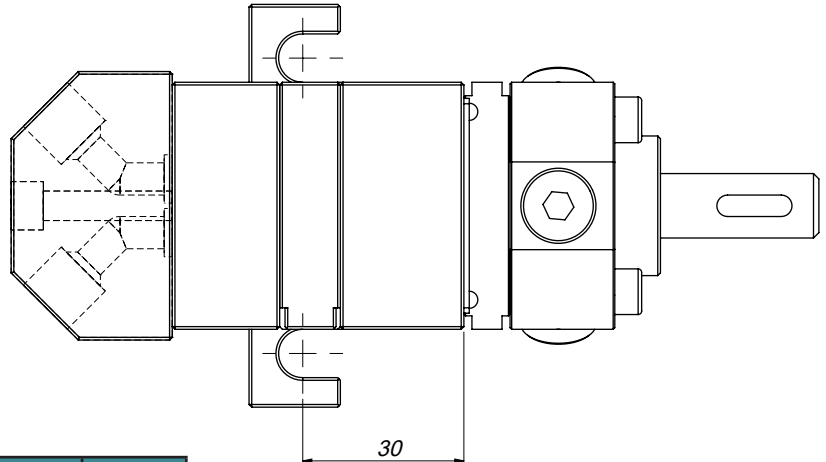
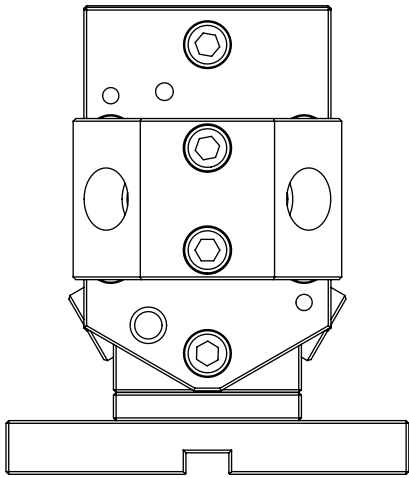
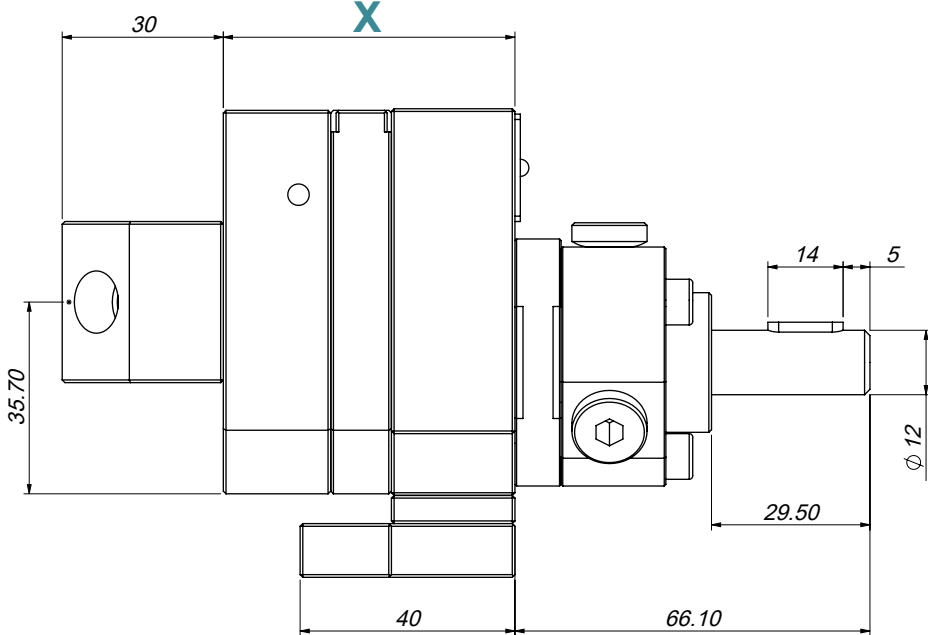
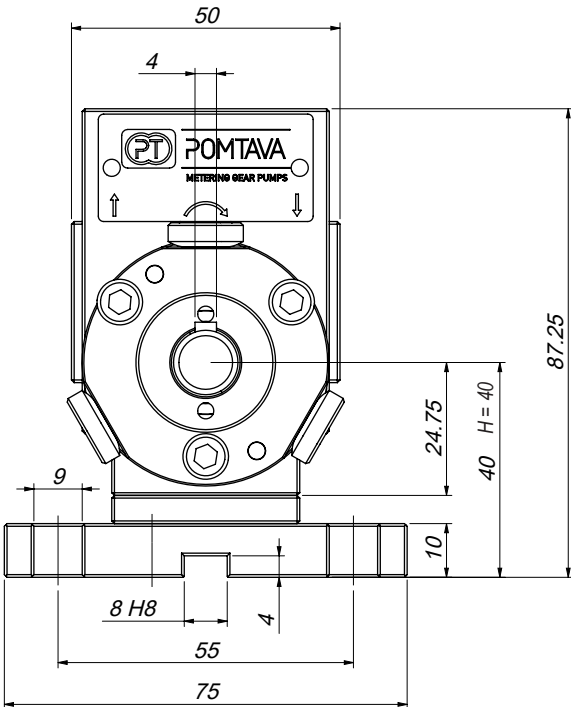
Flow rate (cc/rev)	0.3	0.6	1.2	1.8	2.4	3.0
X (mm)	37.8	40.5	46.1	44.90	47.9	51.4

1610-1-1 (0.05 to 0.1cc/rev)



Flow rate (cc/rev)	0.05	0.1
X (mm)	36.60	38.1

1610-1-1-2



Flow rate (cc/rev)	0.3	0.6	1.2	1.8	2.4	3.0
X (mm)	45.85	48.7	54.3	52.9	55.96	59.4